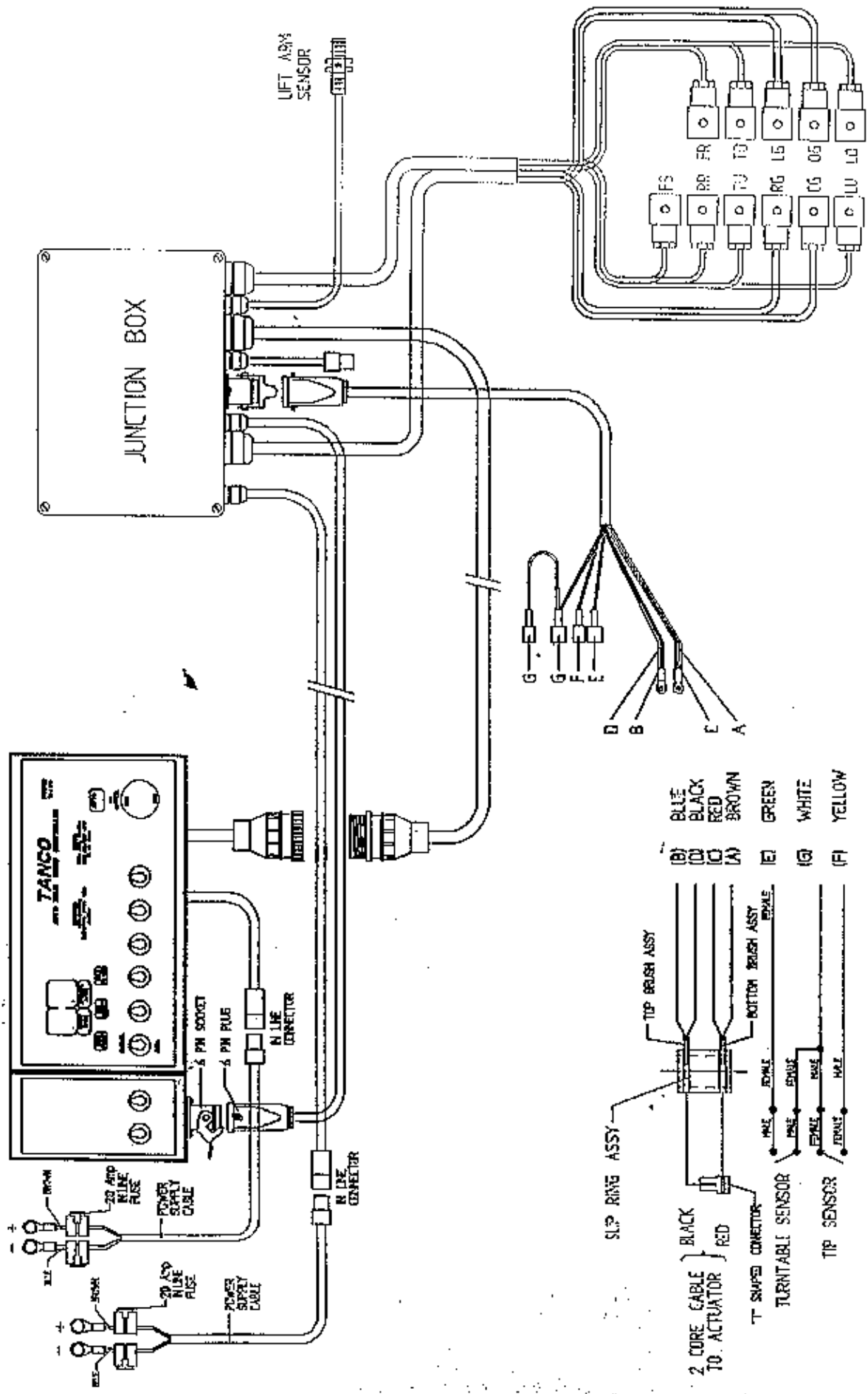


**TANCO AUTOWRAP
1250 A MODEL 1995
OPERATORS HANDBOOK
AND
PARTS LIST
WD65-1250-A-M0695**

TANCO AUTOWRAP 1250 A MODELS JUNCTION BOX AND CONTROLLER FOR 5 BANK VALVE



- (B) BLUE
- (D) BLACK
- (C) RED
- (A) BROWN
- (E) GREEN
- (G) WHITE
- (F) YELLOW

TANCO AUTOWRAP 1995 DRIVE BELT TENSIONING SYSTEM

BELT TENSIONING PROCEDURE

1. CHECK THAT HYDRAULIC MOTOR MOUNTING BRACKET IS SECURE IN POSITION.
2. LOOSEN M10 BOLT WHICH CLAMPS BELT TENSIONER BODY TO MOTOR MOUNT.
3. TENSION BELT BY ADJUSTING TENSIONER USING SPANNER IN DIRECTION OF ARROW "X" UNTIL SETTING OF 30 IS REACHED.
4. RE-TIGHTEN M10 BOLT TO SECURE TENSIONER IN POSITION.

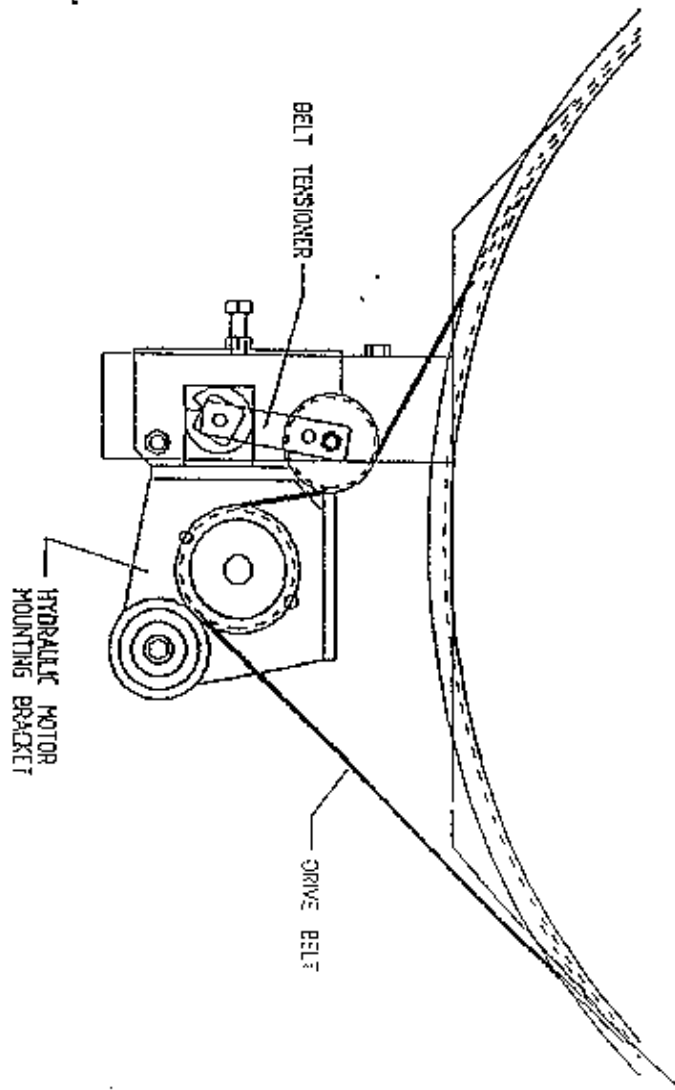
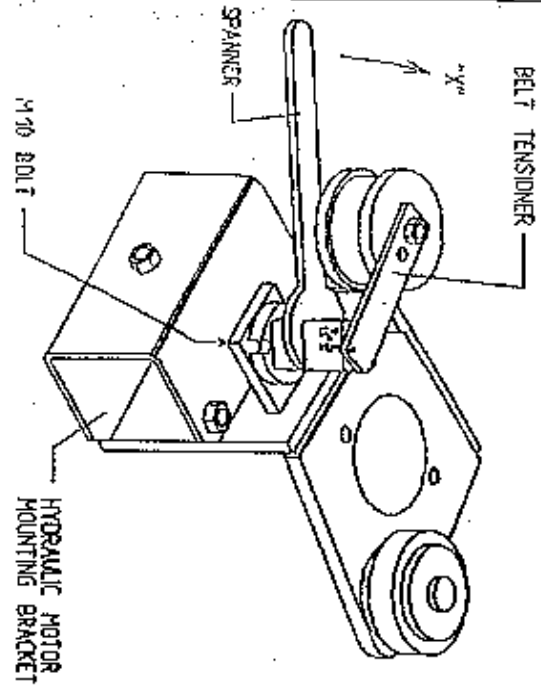
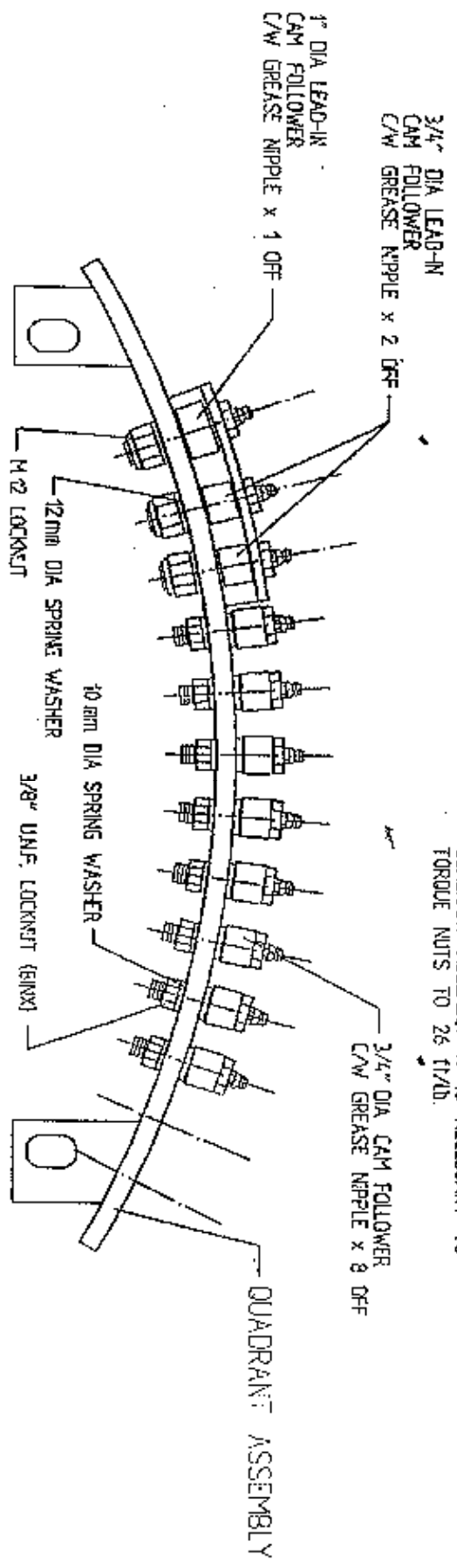


Fig. 3

TANCO AUTOWRAP 1250 MODEL 1995 QUADRANT ASSEMBLY INSTRUCTIONS

NOTE:
WHEN FITTING 3/4" CAM FOLLOWERS TO
QUADRANT ASSEMBLY IT IS NECESSARY TO
TORQUE NUTS TO 26 FT/LB.



PLAN VIEW OF QUADRANT ASSEMBLY

NOTE
ENSURE THAT M20 HEX HD. BOLT X 110MM LONG
USED TO MOUNT 6" DIA SUPPORT WHEELS ON
TURNABLE ASSEMBLY IS POSITIONED WITH BOLT
HEAD TO INSIDE TO AVOID FOULING 3/4" DIA
CAM FOLLOWER.

2 OFF REQUIRED PER M/C

Brake Timing Instructions.

The correct setting of the indexing system is essential to ensure proper bale rotation and correct film overlap. The indexing shaft is fitted with a brake to hold the bale in position after it has rotated. The engaging and disengaging of the brake is actioned by the brake trailing arm roller riding over the brake ramp, releasing the brake and allowing the indexing shaft to rotate. It is essential that the brake is released when the sprocket of the indexing shaft engages with the first cam follower and that it is reapplied when the sprocket releases from the last cam follower. This is factory preset and should only require occasional checking or adjustment. Adjustment of this timing is as follows.

1. With a 17mm spanner, slacken the clamping bolt under the drive belt tensioner until free. This will allow manual rotation of the turntable.
2. The brake spring is extended so that there is a 0.50mm gap between its coils (Fig 10.).
3. Set the gap between the brake trailing arm roller and the floor to 5 - 7 (fig. 10). Note: This gap will decrease as the brake lining wears. If the spring is adjusted this distance must also be reset.
4. Adjust the brake trailing arm so that the brake disengages as the leading tooth of the indexing sprocket passes over the first cam follower. (See Fig 11). As a rule this is when the brake trailing arm roller is half way up the slope of the ramp.
5. Run the sprocket across the cam followers. Two settings should be checked;
 - (i) That the gap between the sprocket and cam follower is 4mm (fig 12.). To adjust this remove shims under the quadrant assembly.
 - (ii) That the clearance between the sprocket and the quadrant is 5 -7 mm (Fig 13.) The quadrant assembly can be moved in or out to adjust.
6. Adjust the long brake ramp so that the brake disengages as the bottom sprocket tooth passes over the last cam follower. (Fig 14.).
7. Repeat this procedure on the opposite quadrant.

BRAKE TIMING INSTRUCTIONS

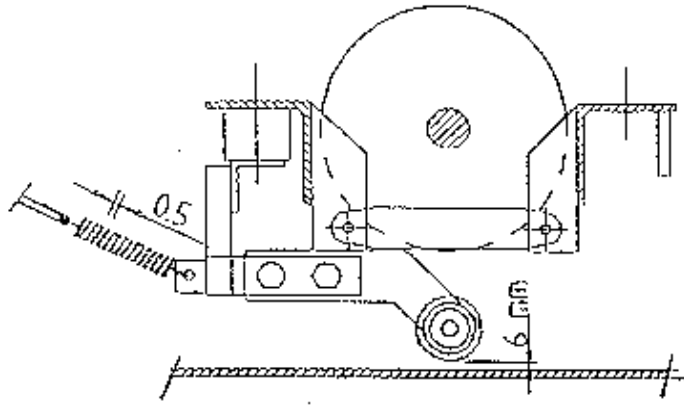
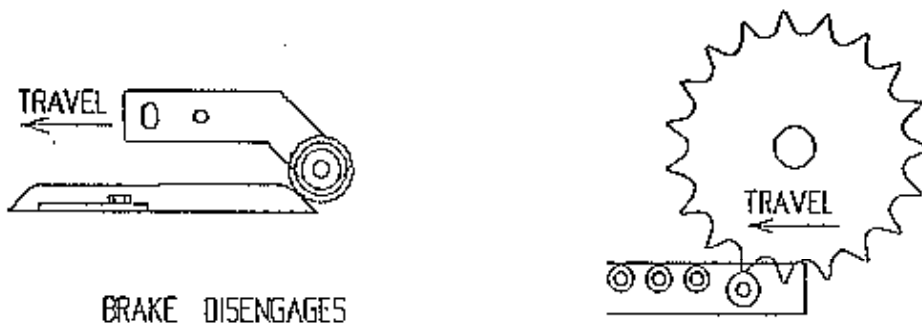


Fig 10



BRAKE DISENGAGES

Fig 11



Fig 12

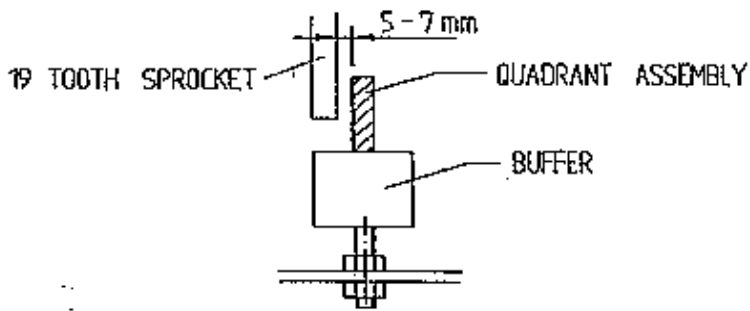
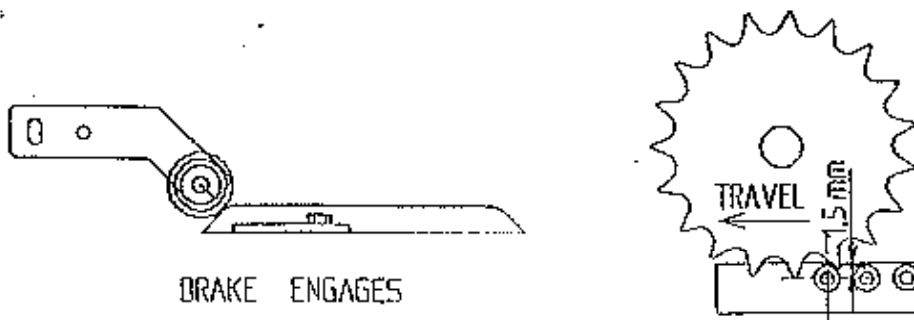


Fig 13



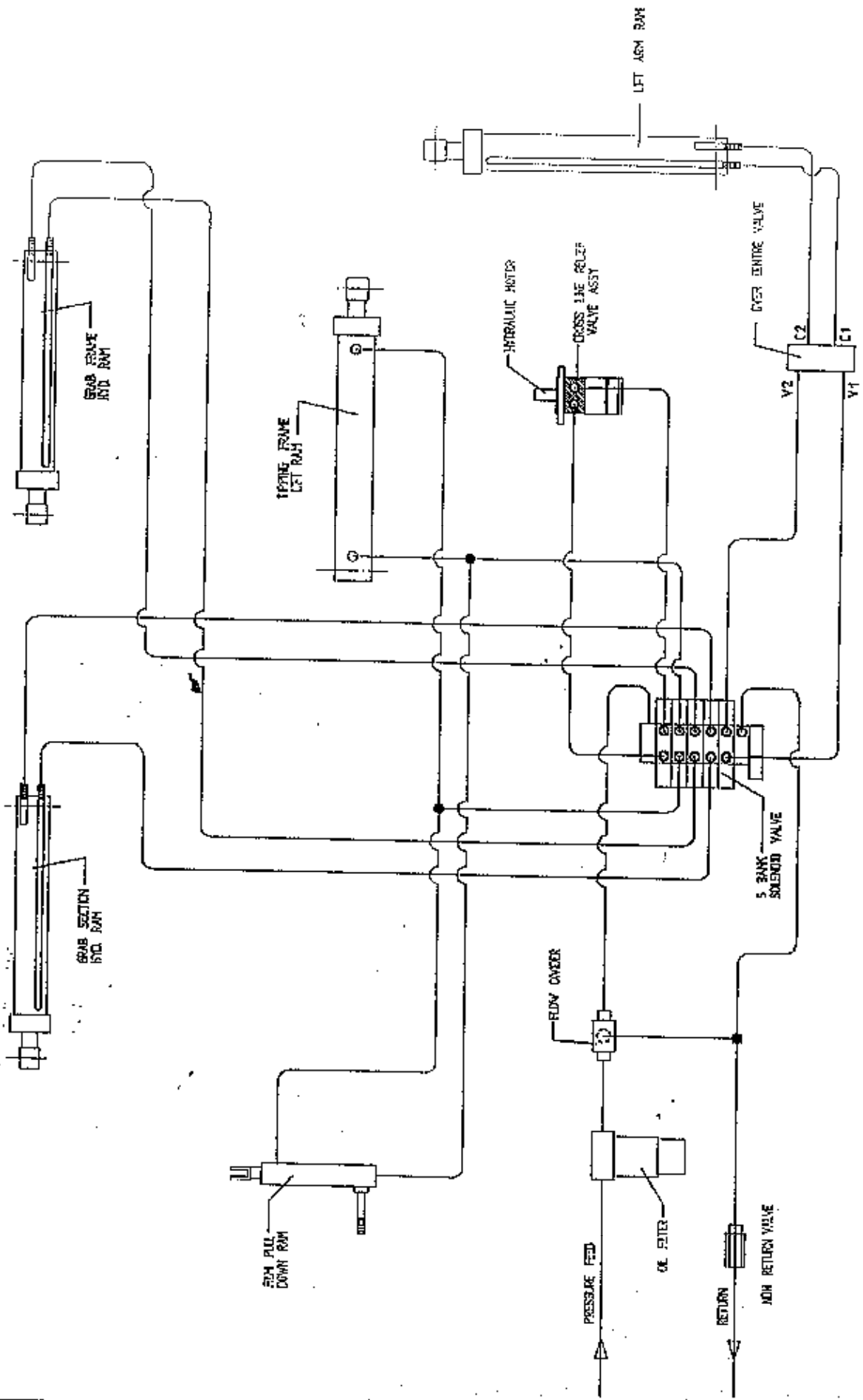
BRAKE ENGAGES

Fig 14

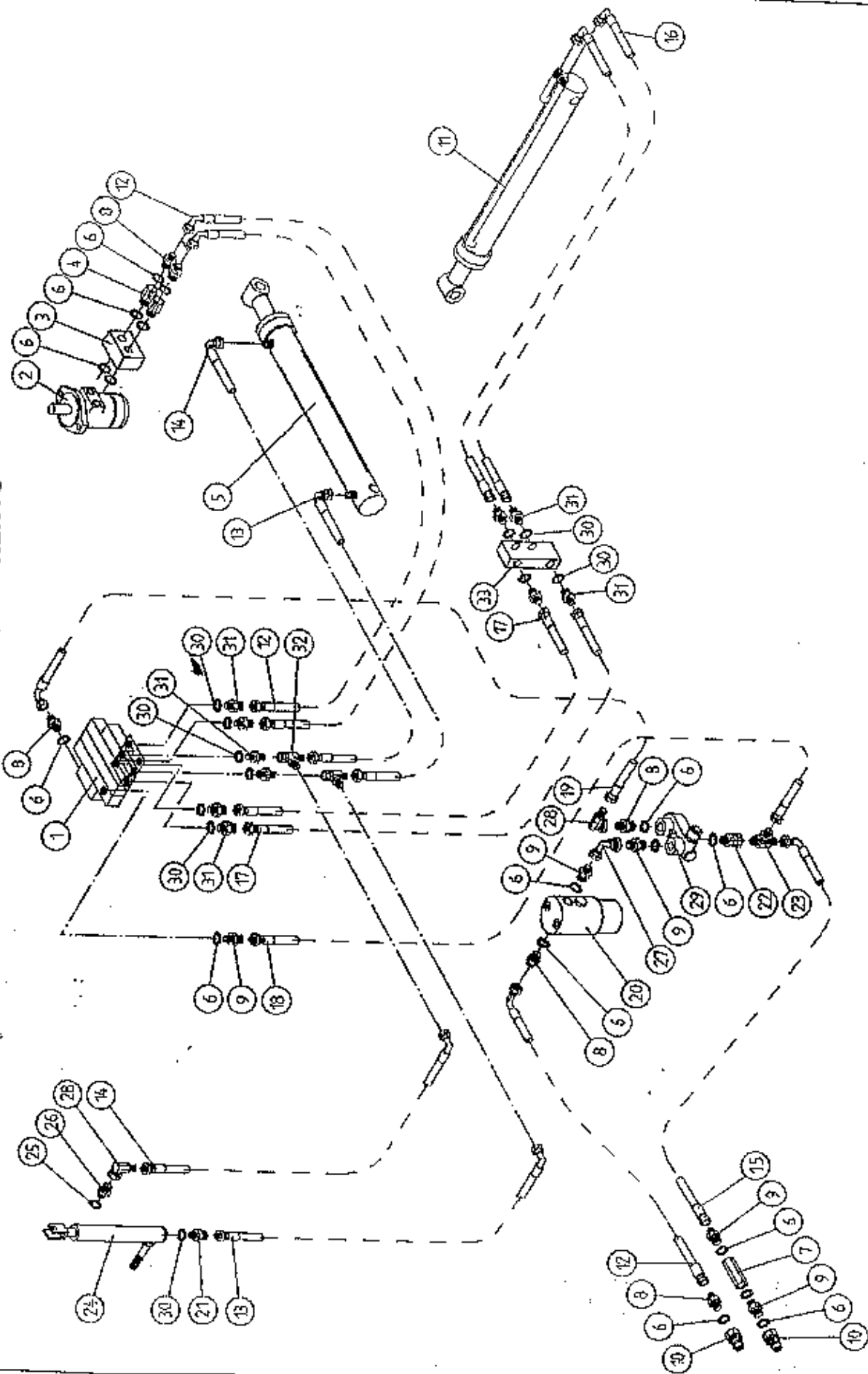
1 20

20 20

TANCO AUTOWRAP 1250 A MODEL - HYDRAULIC CIRCUIT DIAGRAM



**TANCO AUTOWRAP 1250A MODEL (1994)
HYDRAULIC COMPONENTS**



WD625-PL4

TANCO AUTOWRAP 1250A MODELS (1994)

HYDRAULIC COMPONENTS

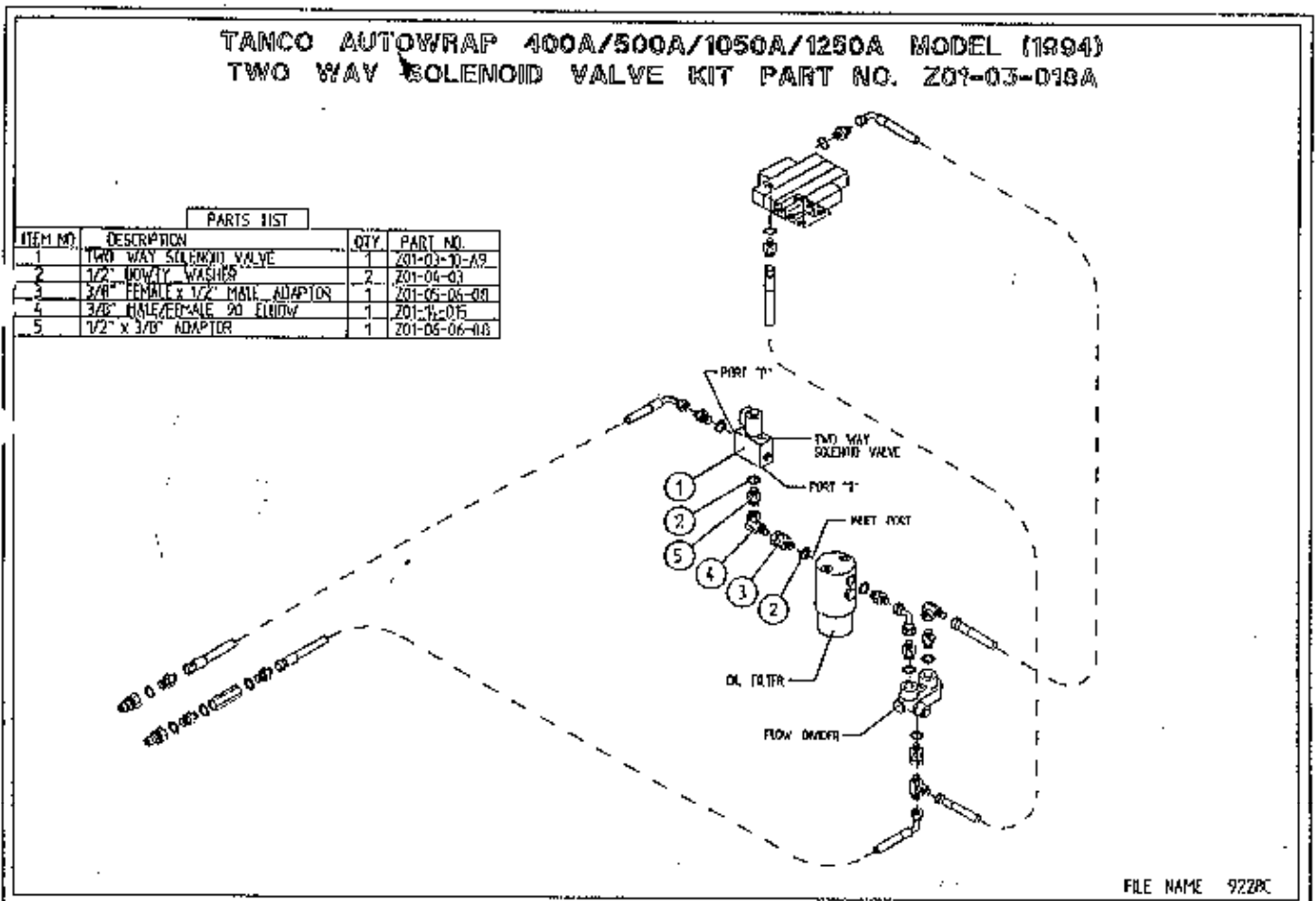
PARTS LIST

ITEM NO.	DESCRIPTION	QTY	PART-NO.
1.	5 BANK SOLENOID VALVE	1	Z01-03-10-A5
2.	HYDRAULIC MOTOR C.L.	1	Z01-02-AR75
3.	CROSS LINE RELIEF VALVE	1	Z01-03-002
4.	1/2" B.S.P. BOTTOM BANJO BOLT (SPECIAL)	2	Z01-18-081
5.	HYDRULIC RAM (TIPPING FRAME)	1	Z01-01-AR687
6.	1/2" DOWTY WASHER	17	Z01-04-03
7.	1/2" NON RETURN VALVE	1	Z01-03-017
8.	1/2" X 3/8" ADAPTOR	6	Z01-06-06-08
9.	1/2" X 1/2" ADAPTOR	5	Z01-06-08-08
10.	1/2" MALE END Q/R COUPLING	2	Z01-15-081
11.	HYD. RAM (FOR LIFT ARM)	1	Z01-01-AW
12.	96" ST/90 3/8" D/W HOSE	3	Z38-R2-96-S9
13.	60" ST/90 3/8" D/W HOSE	2	Z38-R2-60-S9
14.	72" ST/90 3/8" D/W HOSE	2	Z38-R2-72-S9
15.	96" ST/90 1/2" D/W HOSE	1	Z12-R1-96-S9
16.	120" ST/90 3/8" D/W HOSE	2	Z38-R2-120S9
17.	16" ST/ST 3/8" D/W HOSE	2	Z38-R2T-17SS
18.	24" ST/90 1/2" D/W HOSE	1	Z12-R2-24-S9
19.	24" ST/90 3/8" D/W HOSE	1	Z38-R2-24-S9
20.	FILTER	1	Z01-24-08
21.	3/8" X 3/8" ADAPTOR FITTED WITH 0.06" RESTRICTOR.	1	Z01-03-40
22.	1/2" MALE X 1/2" FEMALE ADAPTOR	1	Z01-05-08-08
23.	1/2" MALE "T" PIECE	1	Z01-11-003
24.	HYD. RAM D/A (PULL DOWN ARM)	1	Z01-01-AW25
25.	1/4" DOWTY WASHER	1	Z01-04-01
26.	1/4" X 3/8" ADAPTOR	1	Z01-06-04-06
27.	1/2" FEMALE X 1/2" FEMALE 90 ELBOW	1	Z01-14-018
28.	3/8" MALE/FEMALE 90 ELBOW	2	Z01-14-015
29.	IN LINE FLOW DIVIDER	1	Z01-03-10-A6
30.	3/8" DOWTY WASHER	11	Z01-04-02
31.	3/8" X 3/8" ADAPTOR	10	Z01-06-06-06
32.	3/8" MALE X 3/8" MALE X 3/8" FEMALE "T" PIECE	2	Z01-12-002
33.	OVER CENTRE VALVE	1	Z01-03-10-A8

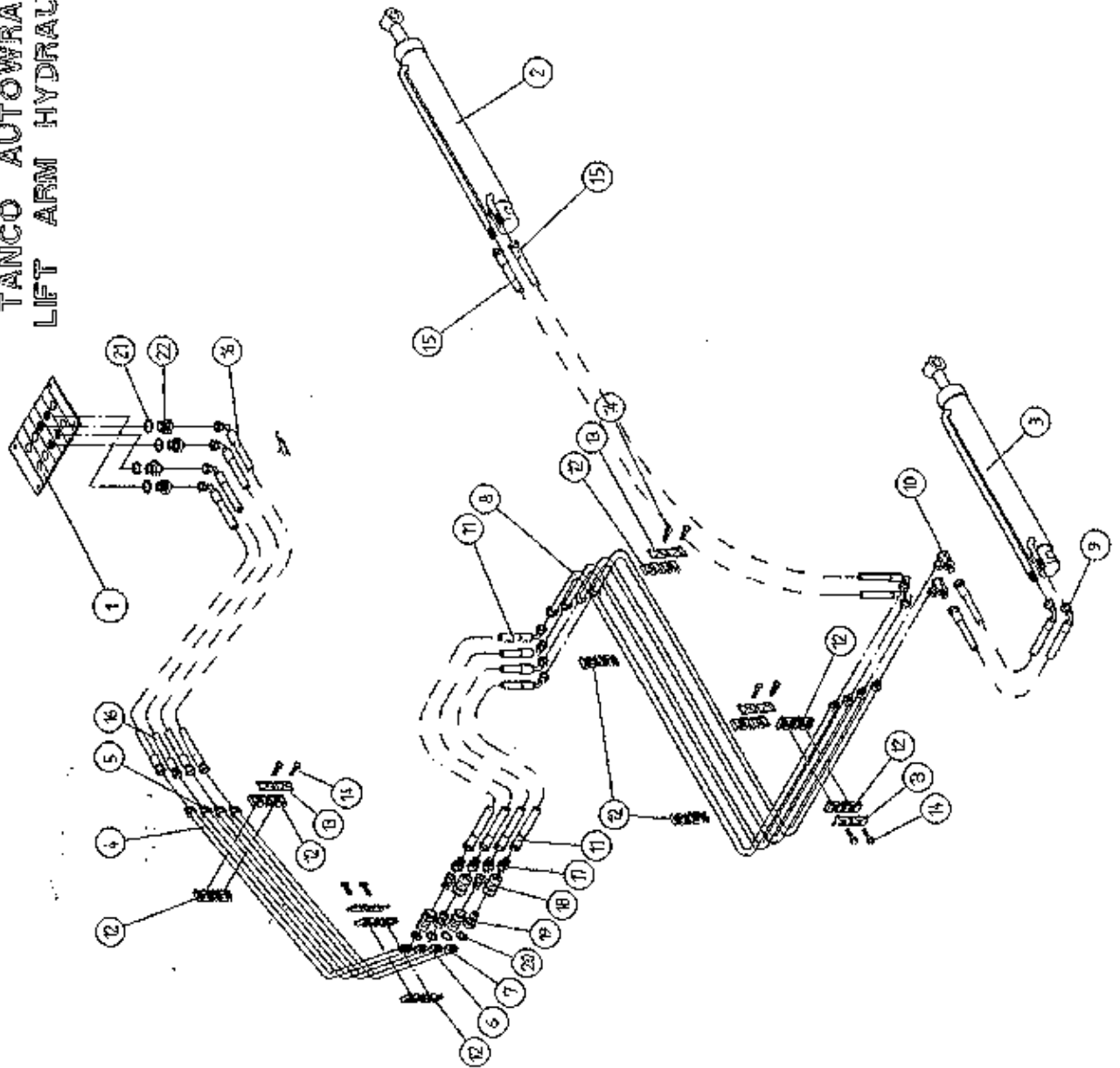
**INSTRUCTION FOR FITTING TWO WAY SOLENOID VALVE TO TANCO
AUTOWRAP MODELS 400A, 500A, 1050A, 1250A.**

**REQUIRED WHEN OPERATING MACHINES ON TRACTORS WITH CLOSED CENTRE
HYDRAULIC SYSTEMS.**

1. Disconnect st/90 hose from inlet port on oil filter.
2. Connect port "T" on solenoid valve assembly to inlet port on oil filter.
3. Reconnect st/90 hose to port "P" on solenoid valve.
4. Connect 2 pin female connector to existing 2 pin connector at junction box.
5. Change the seventh controller function setting from n to J. See instruction manual for further information.



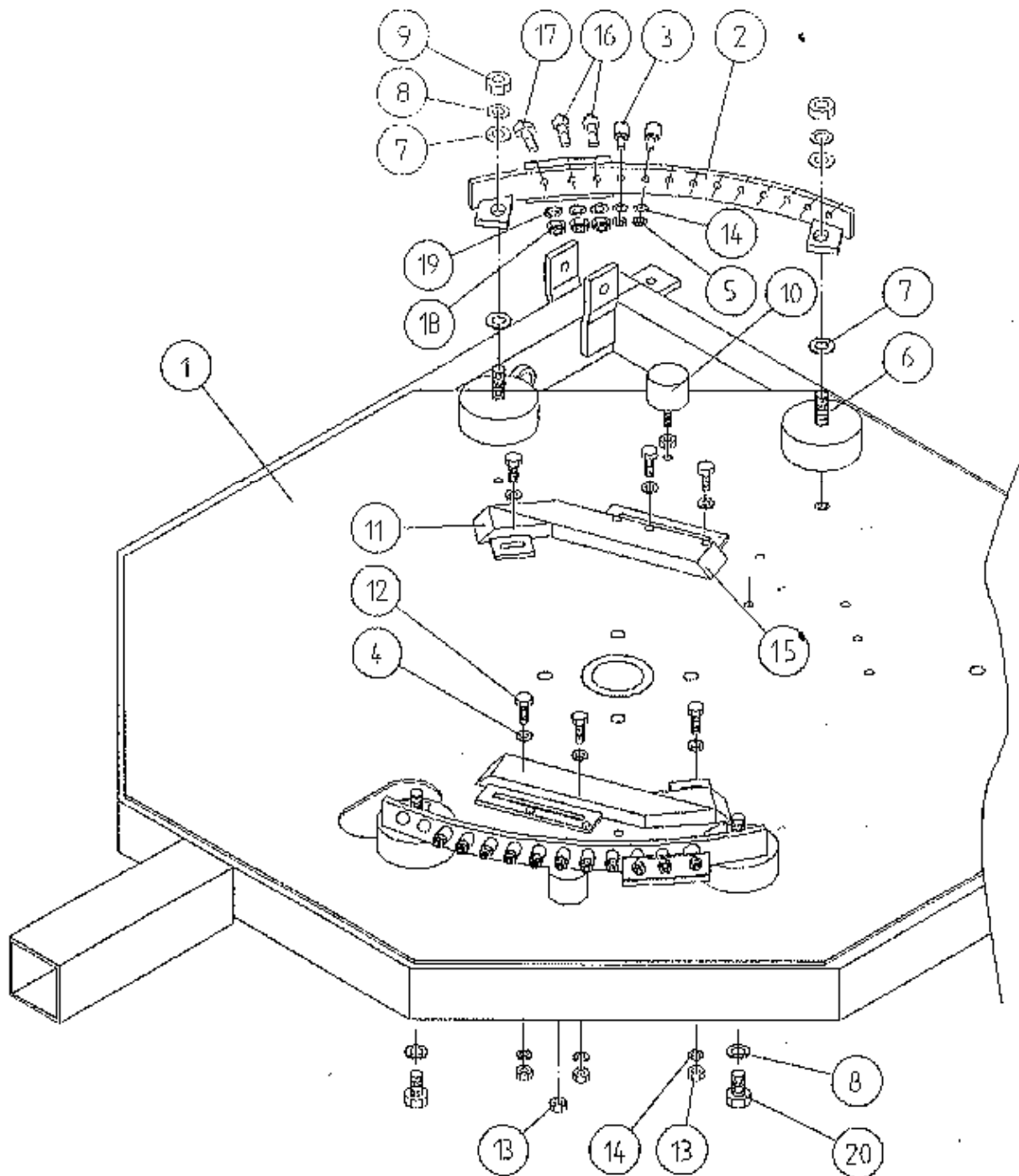
TANCO AUTOWRAP 1250A MODEL
LIFT ARM HYDRAULIC COMPONENTS



TANCO AUTOWRAP 1250A MODEL 1994
LIFT ARM HYDRAULIC COMPONENTS
PARTS LIST

ITEM NO.	DESCRIPTION	QTY	PART-NO
1.	5 BANK SOLENOID VALVE	1	Z01-03-10-A5
2.	HYDRAULIC RAM D/A	1	Z01-01-140
3.	HYDRAULIC RAM D/A	1	Z01-01-140S
4.	HYDRAULIC PIPE (CHASSIS)	1	WD625-070
5.	HYDRAULIC PIPE (CHASSIS)	1	WD625-071
6.	HYDRAULIC PIPE (CHASSIS)	1	WD625-072
7.	HYDRAULIC PIPE (CHASSIS)	1	WD625-073
8.	HYDRAULIC PIPE (LIFT ARM)	4	WD625-HP
9.	12" ST/90 3/8" D/W HOSE	2	Z38-R2-12-S9
10.	3/8" MALE/FEMALE 90 ELBOW	2	Z01-14-015
11.	36" ST/90 3/8" D/W HOSE	4	Z38-R2-36-S9
12.	PIPE CLAMP TOP/BOTTOM (DOUBLE)	10	Z01-24-26
13.	TOP CLAMPING PLATE	10	Z01-24-28
14.	M8 HEX HD BOLT X 35MM LONG	10	Z26-042B
15.	48" ST/90 3/8" D/W HOSE	2	Z38-R2-48-S9
16.	24" ST/90 3/8" D/W HOSE	4	Z38-R2-24-S9
17.	3/8" X 3/8" ADAPTOR	4	Z01-06-06-06
18.	3/8" FEMALE Q/R COUPLING	4	Z01-15-062
19.	3/8" MALE Q/R COUPLING	4	Z01-15-061
20.	3/8" DOWTY WASHER	4	Z01-04-02
21.	1/2" DOWTY WASHER	4	Z01-04-03
22.	1/2" X 3/8" ADAPTOR	4	Z01-06-06-08

TANCO AUTOWRAP 1250 MODEL 1995
 INDEXING QUADRANT ASSY 50% OVERLAP
 WITH 750 mm FILM

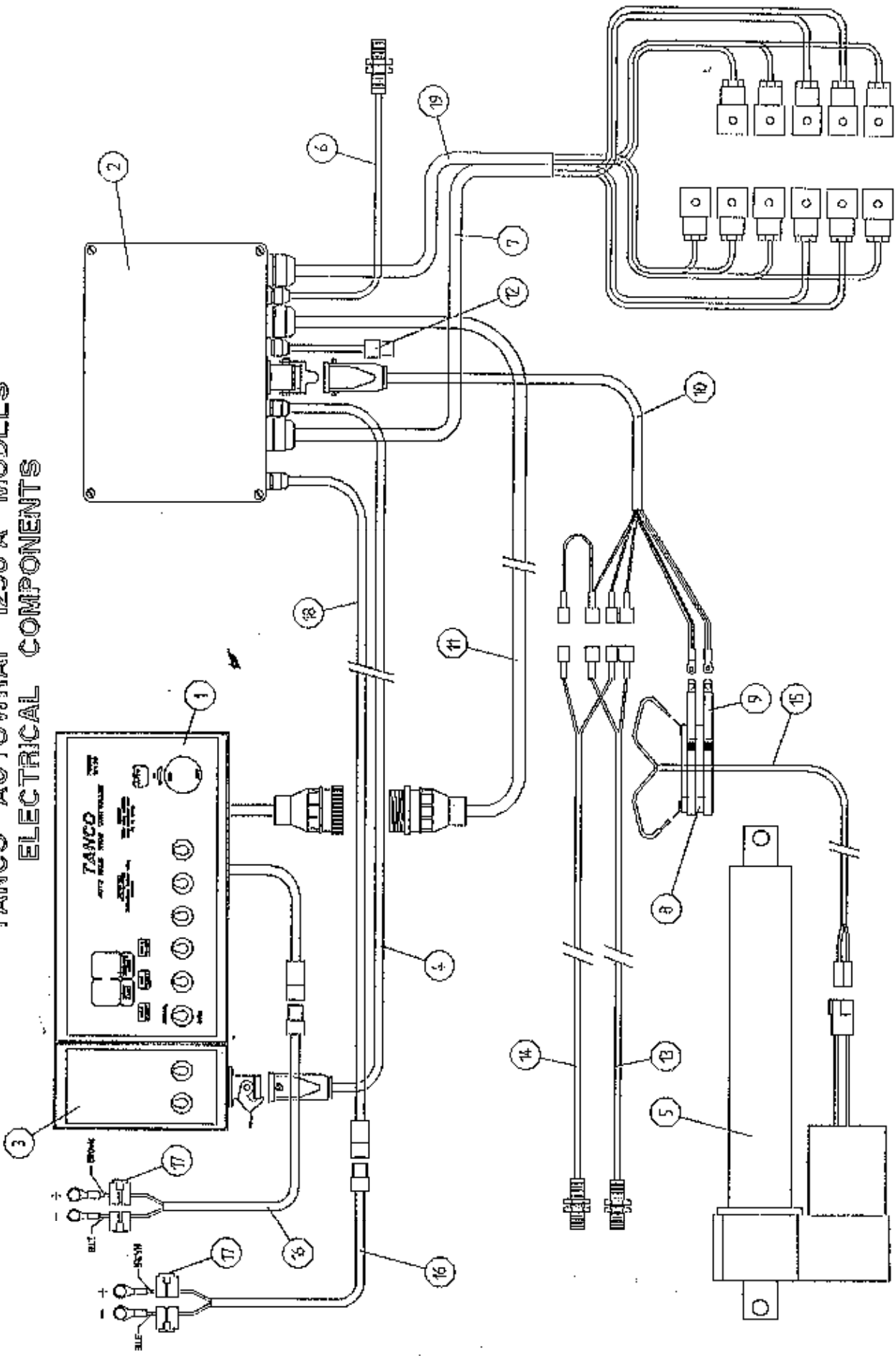


TANCO AUTOWRAP 1250 1995
PARTS LIST

INDEXING QUADRANT ASSEMBLY (50% OVERLAP) WITH 750MM WIDE FILM ROLL

ITEM NO.	DESCRIPTION	QTY	PART-NO.
1.	TIPPING FRAME ASSY	1	WD60-TF
2.	QUADRANT ASSY	2	WD625-QA
3.	3/4" DIA CAM FOLLOWER (HEAVY DUTY) C/W GREASE NIPPLE	14	Z06-425
4.	10MM DIA FLAT WASHERS	6	Z11-02-10
5.	3/8" UNF LOCKNUTS (BINX)	14	Z20-06
6.	RUBBER BUFFER 100MM DIA X 40MM LONG	4	Z40-22
7.	16MM DIA FLAT WASHERS	18	Z10-02-16
8.	16MM DIA SPRING WASHERS	8	Z12-02-16
9.	M16 HEX NUT	8	Z18-16
10.	RUBBER BUFFER 50MM DIA X 25MM LONG	2	Z40-23
11.	CAM ASSY (SHORT)	2	WD623-CAS
12.	M10 HEX HD SET X 30MM LONG	6	Z26-062S
13.	M10 HEX NUT	8	Z18-10
14.	10MM DIA SPRING WASHER	24	Z12-02-10
15.	CAM ASSY (LONG)	2	WD623-CAL
16.	3/4" DIA LEAD-IN CAM FOLLOWER	4	Z06-427
17.	1" DIA LEAD-IN CAM FOLLOWER	2	Z06-428
18.	M12 HEX HD LOCKNUT (NYLOCK)	3	Z23-12
19.	12mm DIA SPRING WASHER	3	Z12-02-12
20.	M16 HEX HD SET x 30mm LONG	4	Z26-120S

TANCO AUTOWRAP 1250 A MODELS
ELECTRICAL COMPONENTS

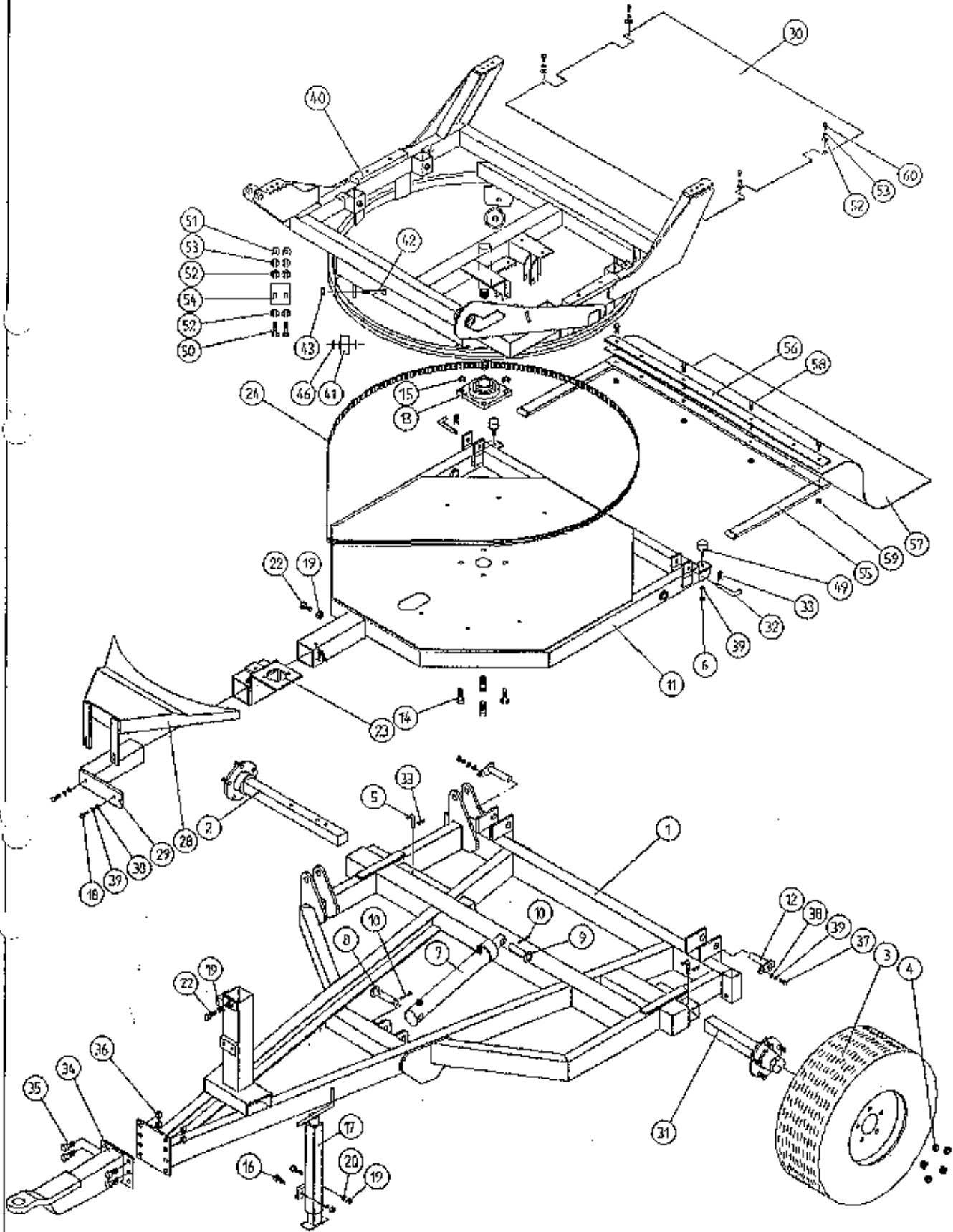


FILE NAME 9227F

TANCO AUTOWRAP 1250A MODELELECTRICAL COMPONENTSPARTS LIST

ITEM NO	DESCRIPTION	QTY	PART-NO.
1.	CONTROL BOX	1	D606
2.	JUNCTION BOX (5 BANK VALVE)	1	ZDG-JBS
3.	ADDITIONAL CONTROL BOX FOR 1250A MODEL	1	ZDG-RCB
4.	LEAD FOR ADDITIONAL CONTROL BOX C/W HEARTING PLUG.	1	ZDG-CB
5.	WARNER LINEAR ACTUATOR	1	ZD605-510
6.	LIFT ARM SENSOR	1	ZD606-LAS
7.	ADDITIONAL LOOM FOR VALVE C/W HIRCHMANN FOR 1250A	1	ZD606-010
8.	SLIP RING ASSY	1	ZD605-308
9.	BRUSHES	1	ZD606-302
10.	7 CORE CABLE C/W HEARTING PLUG	1	D605-7C
11.	24 CORE INTER CONNECTING LEAD C/W CONNECTORS	1	D605-24C
12.	SYSTEM PRESSURE LEAD	1	ZD605-070
13.	ROTATING SENSOR	1	ZD606-RS
14.	TIP SENSOR	1	ZD606-TS
15.	TWO CORE CABLE FOR SLIP RING	1	D605-02C
16.	MAIN BATTERY LEAD	2	ZD606-030
17.	IN-LINE FUSE	4	ZD606-100
18.	MAIN LEAD FOR JUNCTION BOX	1	ZD606-050
19.	LOOM FOR VALVE C/W HIRSCHMAN	1	ZD606-081

TANCO AUTOWRAP 1250A MODELS MAIN ASSEMBLY



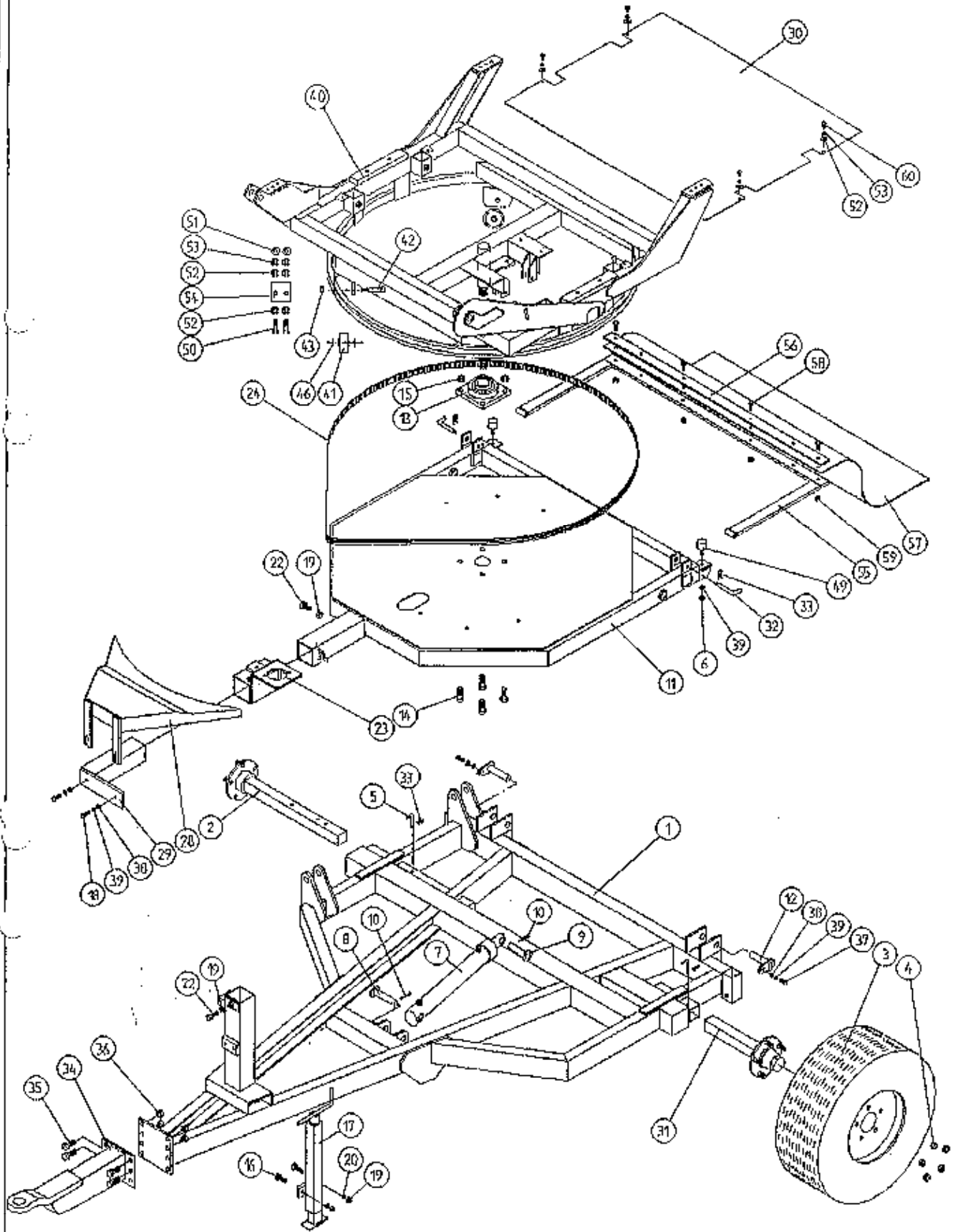
WD010 - PLS

**TANCO AUTOWRAP 1250 A MODEL
MAIN ASSEMBLY
PARTS LIST**

WD610-PL5

ITEM NO	DESCRIPTION	QTY	PART-NO.
1.	CHASSIS ASSY	1	WD60-CHA
2.	STUB AXLE (LONG)	1	Z04-033
3.	WHEELS	2	Z04-03
4.	WHEEL NUTS	10	M22AWNA
5.	BISSEL PIN	1	Z03-22-AW82
6.	M10 HEX NUT	2	Z18-10
7.	HYD. RAM	1	Z01-01-AR687
8.	RAM BOTTOM PIVOT PIN	1	Z03-02-330
9.	RAM TOP PIVOT PIN	1	Z03-03-50
10.	2" X 1/4" SPLIT PIN	2	Z02-21-29
11.	TIPPING FRAME ASSY	1	WD60-TF
12.	TIPPING FRAME PIVOT PIN C/W GREASE NIPPLE	2	Z03-01-905
13.	2" DIA FLANGE BEARING	1	Z06-49EC
14.	5/8" UNF HEX HD SET X 2" DIA	4	Z30B-064
15.	5/8" UNF LOCKNUT	4	Z20-10
16.	M12 HEX HD SET X 40MM LONG	2	Z26-084S
17.	SCREW JACK ASSY	1	WD60-JA
18.	M10 HEX HD ST X 30MM LONG	2	Z26-023
19.	M12 HEX NUT	5	Z18-12
20.	12MM DIA SPRING WASHER	2	Z12-02-12
22.	M12 HEX HD SET X 30MM LONG	2	Z26-082S
23.	HYD MOTOR MOUNTING ASSY	1	WD60-HMB
24.	170" LONG X 1/2" PITCH X 1" WIDE TOOTHED BELT	1	Z05-02-AW2
28.	HYD MOTOR GUARD ASSY	1	WD60-HMG
29.	HYD MOTOR GUARD MOUNTING BRACKET	1	WD60-HAMB
30.	TURN TABLE COVER PLATE	1	WD612-022
31.	STUB AXLE (SHORT)	1	Z04-032
32.	BISSEL PIN	2	Z03-22-AW100
33.	4MM "R" CLIP	4	Z36-02
34.	HITCH ASSY	1	WD65-HIT
35.	M16 HEX HD SET X 45MM LONG	4	Z26-123S
36.	M16 LOCKNUTS	4	Z23-16
37.	M10 HEX HD SET X 25MM LONG (TUFLOCK)	2	Z26-061S
38.	10MM DIA MACHINES FLAT WASHER	4	Z11-02-10
39.	10MM DIA SPRING WASHER	5	Z12-02-10
40.	TURNTABLE ASSY	1	WD610-TA
41.	SUPPORT WHEELS (4" DIA)	4	Z06-466
42.	AXLE ASSY C/W GREASE NIPPLE	4	Z03-22-AW/AX Z39-60
43.	M20 LOCKNUTS	4	Z23-20
46.	SPACER	8	Z18-12
49.	BUFFER 50MM LONG DIA X 40MM LONG	2	Z40-20
50.	M8 HEX HD SET X 20MM LONG	4	Z26-039S
51.	M8 HEX NUT	4	Z18-08
52.	8MM DIA FLAT WASHER (MUD FLAT)	8	Z11-02-08
53.	8MM DIA SPRING WASHER	8	Z12-02-08
54.	SCRAPER	2	WD60-705
55.	RUBBER MAT MOUNTING ASSY	1	WD63-MMF
56.	CLAMPING PLATE	1	WD63-1300

TANCO AUTOWRAP 1250A MODELS MAIN ASSEMBLY



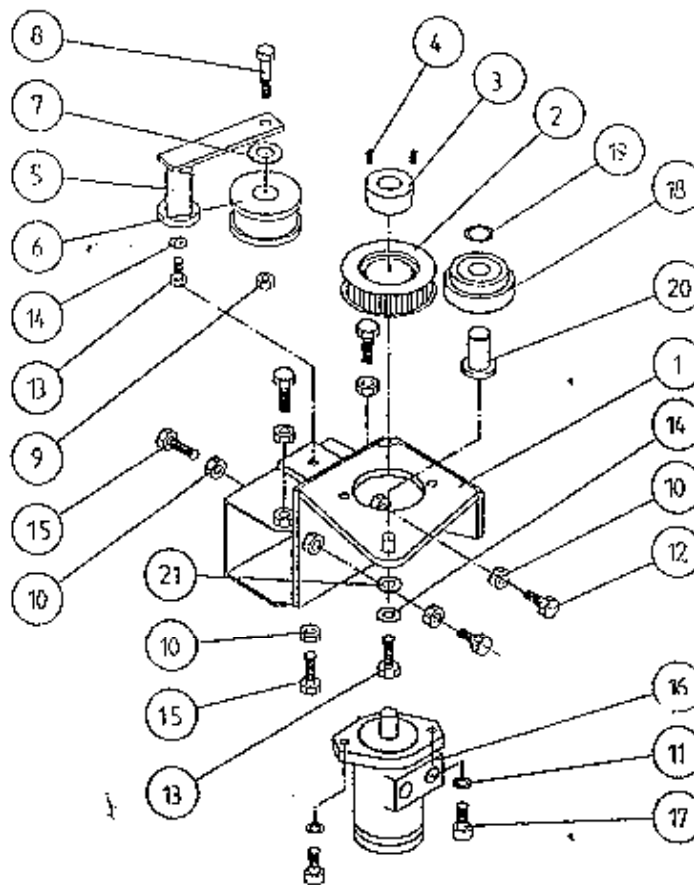
WDS10 - PL.5

TANCO AUTOWRAP 1250A MODEL
MAIN ASSEMBLY

PARTS LIST

ITEM NO	DESCRIPTION	QTY	PART-NO
57.	BALE MAT	1	Z05-02AW
58.	M8 HEX HD BOLT X 50MM LONG	4	Z26-045B
59.	M8 LOCKNUTS	4	Z23-08
60.	M8 CHEESE HD ST X 20MM LONG	4	Z13-19-08-20

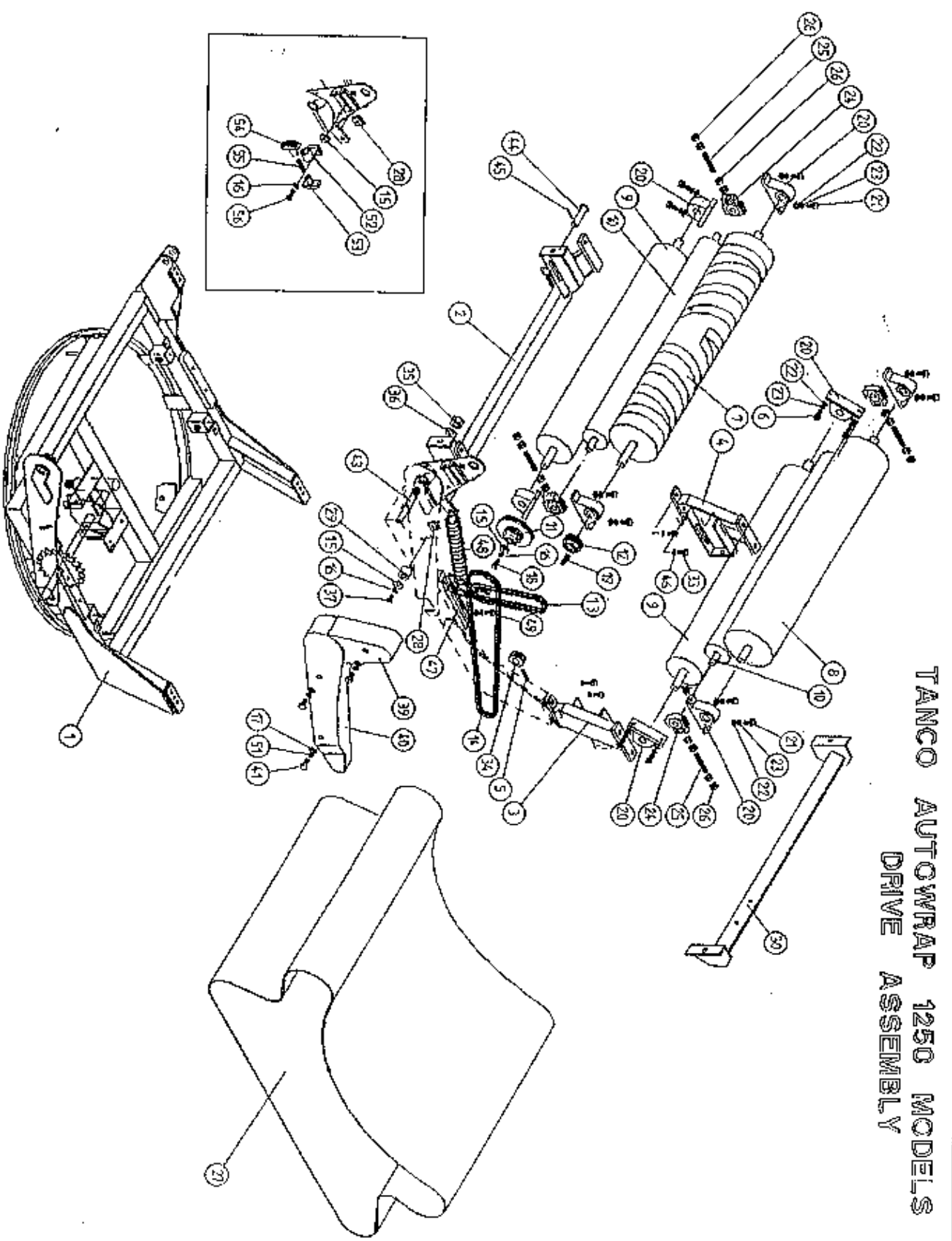
**TANCO AUTOWRAP 1995 MODEL
HYDRAULIC MOTOR DRIVE ASSEMBLY**



PARTS LIST

ITEM NO.	DESCRIPTION	QTY.	PART-NO.
1.	HYDRAULIC MOTOR MOUNTING ASSY.	1	WD610-HMB
2.	95 SQ. AW TIMING PULLY	1	Z09-005-AW1-95
3.	TAPER LOCK BUSH TO SUIT 1" DIA SHAFT	1	Z06-AW21
4.	M10 STUDS X 15MM	2	Z28-01
5.	ROSTA TENSIONING UNIT ARM	1	Z06-454
6.	STEPPED ROLLER C/W BEARINGS	1	Z06-456
7.	SPACER	1	WD60-798
8.	M10 HEX HD BOLT X 60MM LONG	1	Z26-067B
9.	M10 LOCKNUT	1	Z23-10
10.	M12 HEX NUT	6	Z18-12
11.	12MM DIA SPRING WASHER	2	Z12-02-12
12.	M12 HEX HD SET X 30MM LONG	2	Z26-082S
13.	M10 HEX HD SET X 30MM LONG	2	Z26-062S
14.	10MM DIA SPRING WASHER	2	Z12-02-10
15.	M12 HEX HD SET X 40MM LONG	6	Z26-084S
16.	HYDRAULIC MOTOR C.L.	1	Z01-02-AR75
17.	M12 SOCKET HD SCREW X 30MM LONG	2	Z13-6-12X30
18.	IDLER ROLLER C/W BEARINGS	1	WD610-BIR
19.	CIRCLIP	1	Z28-525
20.	IDLER ROLLER PIVOT SHAFT	1	WD610-IRS
21.	10mm DIA FLAT WASHER	1	Z11-02-10

TANCO AUTOWRAP 1250 MODELS (1994)
DRIVE ASSEMBLY



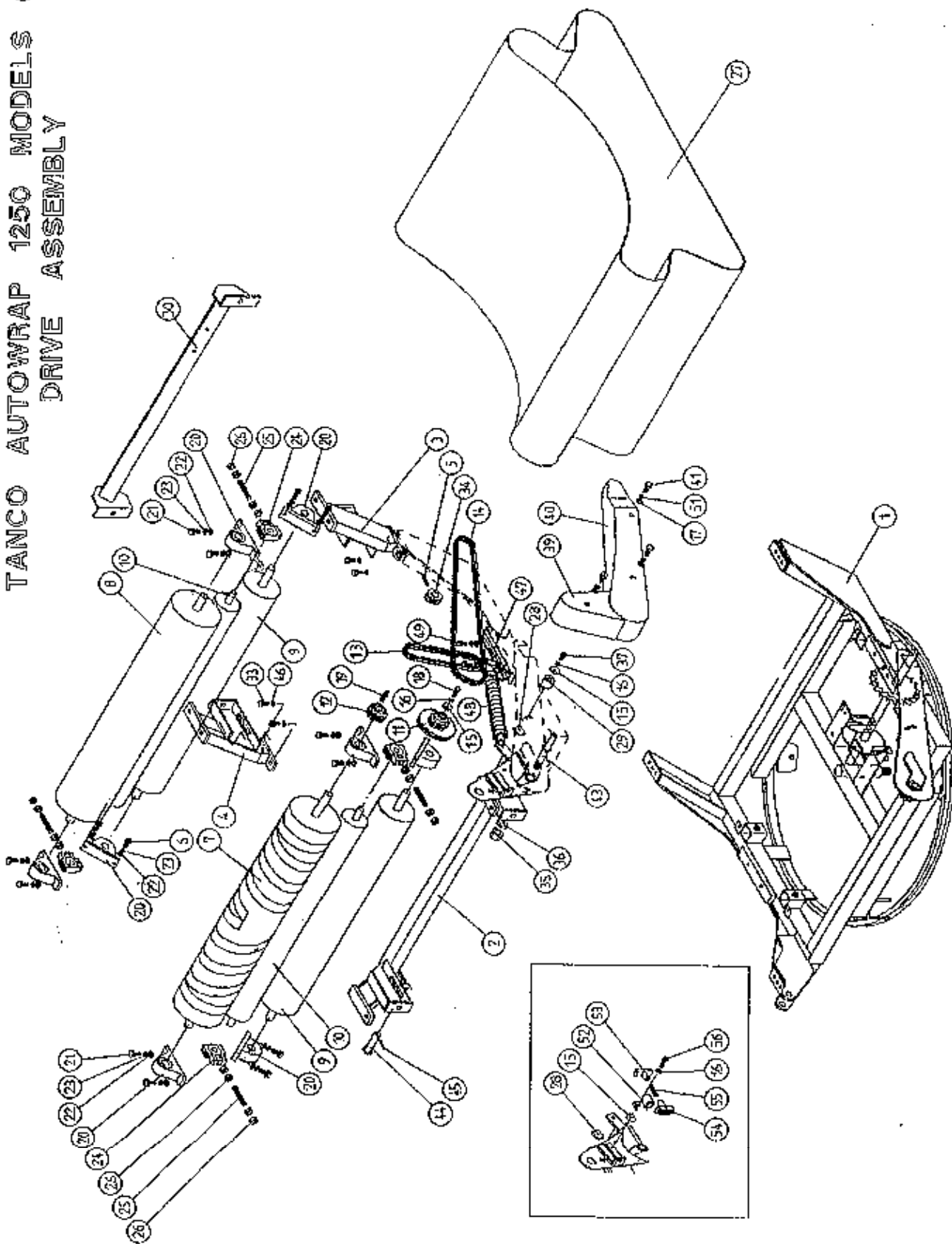
**TANCO AUTOWRAP 1250 MODEL 1994
DRIVE ASSEMBLY**

WD63-PL12

PARTS LIST

ITEM NO	DESCRIPTION	QTY	PART-NO
1.	TURNTABLE ASSY	1	WD610-TA
2.	ROLLER MOUNTING BRACKET (SWIVEL)	1	WD612-RMS
3.	ROLLER MOUNTING BRACKET (FIXED)	1	WD612-RM1
4.	ROLLER MOUNTING BRACKET (FIXED)	1	WD612-RM2
5.	5/16" DIA X 45MM LONG TENSION PIN	1	Z03-20-022
6.	M14 HEX HD SET X 50MM LONG	8	Z26-104S
7.	BIG ROLLER ASSY (DRIVE)	1	WD610-DRA
8.	BIG ROLLER ASSY (IDLER)	1	WD610-BRI
9.	ROLLER ASSY (IDLER)	2	WD65-BRI
10.	TRACKING ROLLER ASSY (LONG)	2	WD610-TRL
11.	38 TOOTH X 19 TOOTH X 1/2" PITCH DOUBLE DUPLES SPROCKET TO SUIT 08B-2 CHAIN	1	Z06-D610-1938
12.	19 TOOTH X 1/2" PITCH DUPLEX SPROCKET TO SUIT 08B-2 CHAIN	1	Z06-D610-19
13.	CHAIN 08B-2 1/2" PITCH DUPLEX X 63 PITCHES INCL. JOINER	1	Z09-AW-10
14.	CHAIN 08B-2 1/2" PITCH DUPLEX X 156 PITCHES INCL. JOINER	1	Z09-AW-20
15.	RETAINING COLLAR	2	WD623-071
16.	10MM DIA SPRING WASHER	3	Z12-02-10
17.	10MM DIA FLAT WASHER	5	Z10-02-10
18.	M10 HEX HD SET X 30MM LONG	1	Z26-062S
19.	5/16" KEY STEEL X 32MM LONG	1	WD623-K32
20.	1 1/4" PILLOW BLOCK BEARING	8	Z06-485
21.	M14 HEX HD SET X 45MM LONG	8	Z26-103S
22.	14MM DIA FLAT WASHER	24	Z11-02-14
23.	14MM DI SPRING WASHER	24	Z12-02-14
24.	SLIDING BEARING ST1	4	Z06-47ST
25.	M20 THREADED BAR X 135MM LONG	4	WD65-20TB
26.	M20 HEX NUTS	16	Z18-20
27.	BALE BELT 1000MM X 5150MM LONG	1	Z05-02AWV2-93
28.	LOCKING PLATE	1	WD623-060
29.	CHAIN TENSIONER ROLLER	1	WD60-CT
30.	CUT AND START MOUNTING FRAME	1	WD612-CSM
31.	LOCKING PLATE	2	WD623-060
32.	M14 HEX NUTS	8	Z18-14
33.	M12 HEX HD SET X 25MM LONG	4	Z26-081S
34.	15 TOOTH X 1.2" PITCH DUPLEX SPROCKET	1	Z06-AW12S
35.	1" DIA UNC LOCKNUT	1	Z23-251
36.	1" H/D FLAT WASHER	2	Z10-02-25
37.	M10 HEX HD BOLT X 60MM LONG	1	Z26-066B
38.	M10 HEX HD BOLT X 80MM LONG	1	Z26-0692
39.	CHAIN GUARD (SMALL)	1	WD612-CGS
40.	CHAIN GUARD (LARGE)	1	WD612-CGL
41.	M10 HEX HD SET X 20MM LONG (TUFLOCK)	3	Z26-060ST
42.	STAR WASHER 1/2" DIA	3	Z10-02-121
43.	SPROCKET/BRACKET PIVOT SHAFT	1	WD610-71
44.	SWIVEL BRACKET PIVOT PIN J-50	1	Z03-03-50

TANCO AUTOWRAP 1250 MODELS (1994)
DRIVE ASSEMBLY

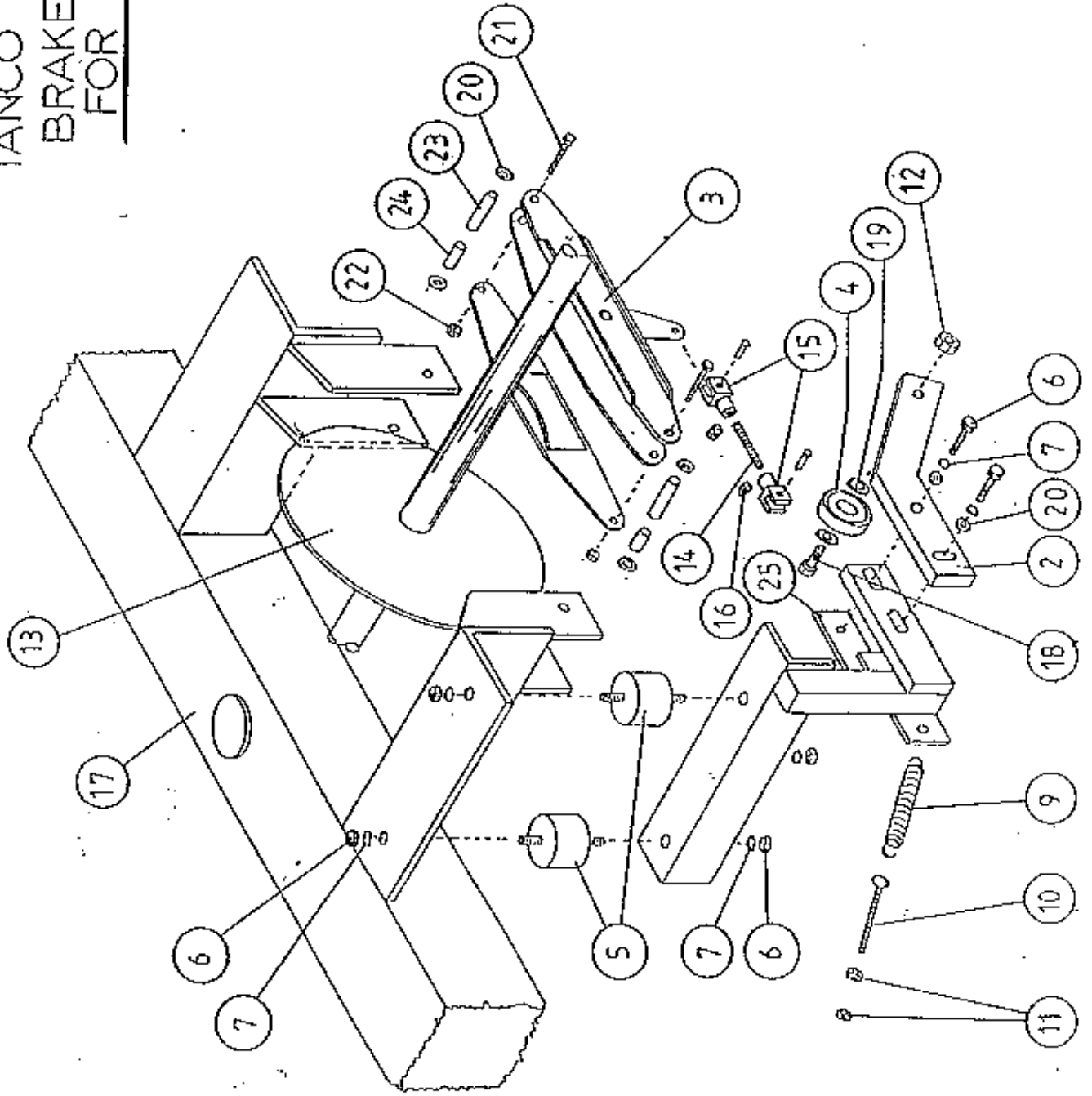


TANCO AUTOWRAP 1250 MODEL 1994
DRIVE ASSEMBLY

PARTS LIST

ITEM NO	DESCRIPTION	QTY	PART-NO.
45.	2" X 1/4" SPLIT PIN	1	Z03-21-29
46.	12MM DIA SPRING WASHER	4	Z12-02-12
47.	SPRING ANCHOR BRACKET	1	WD612-SAB
48.	ROLLER MOUNTING SWIVEL TENSION SPRING	1	Z07-21
49.	M12 HEX HD SETS X 30MM LONG	2	Z26-082S
50.	12MM DIA FLAT WASHER	2	Z10-02-12
51.	1/2" DIA STAR WASHER	3	Z11-02-10
52.	CHAIN TENSIONER BODY	1	WD610-CTB
53.	CHAIN TENSIONER BLOCK ASSY INNER	1	WD610-TB1
54.	CHAIN TENSIONER BLOCK ASSY OUTER	1	WD610-TB0
55.	SPRING 14.5MM O.D. X 1.6MM WIRE X 60MM LONG	1	Z07-48
56.	M10 HEX HD SET X 40MM LONG	1	Z26-064S

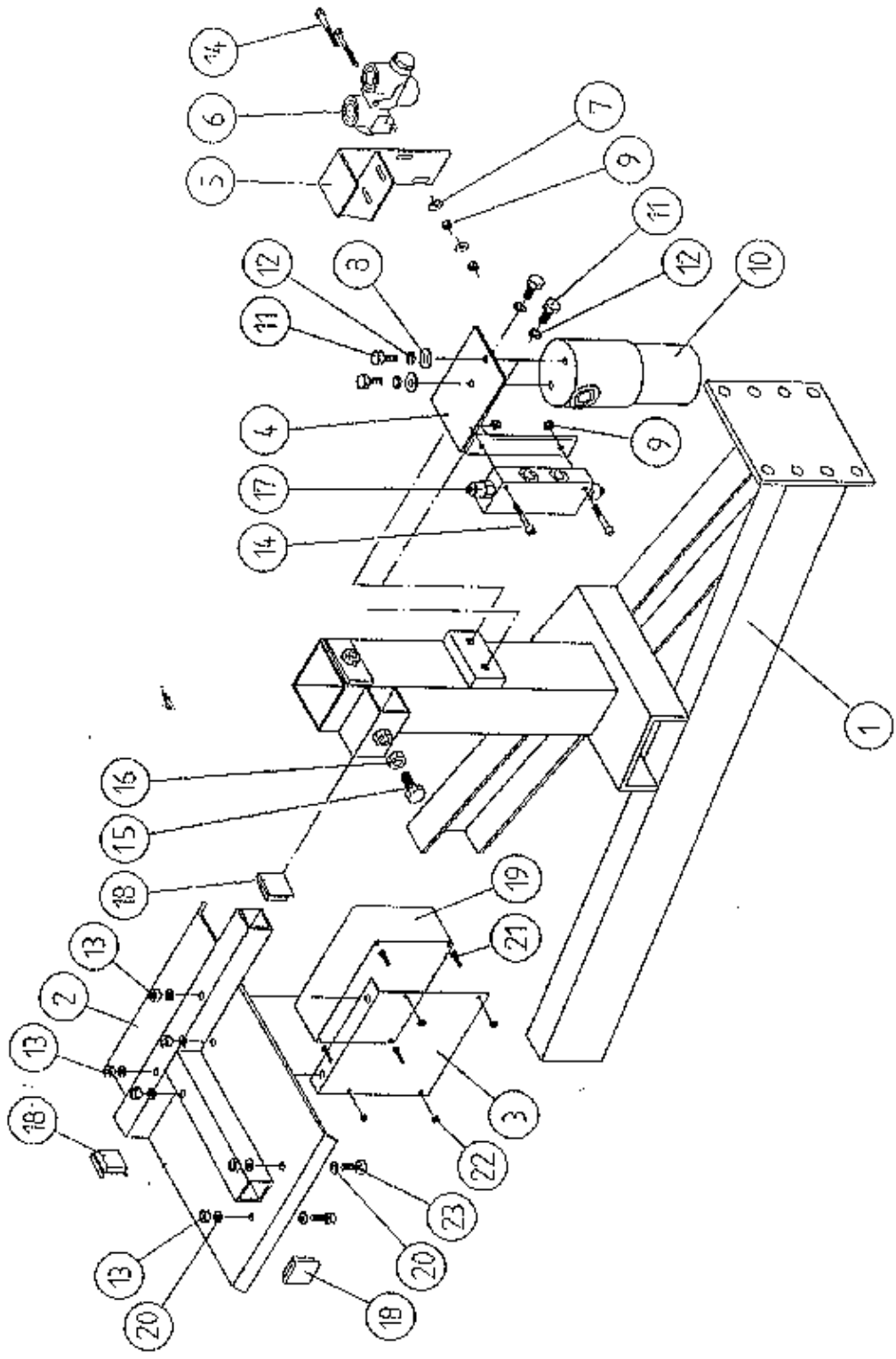
TANCO AUTOWRAP 1994
BRAKE ARRANGEMENT
FOR INDEXING SHAFT



**TANCO AUTOWRAP 1994
BRAKE ARRANGEMENT FOR INDEXING SHAFT
PARTS LIST**

ITEM NO	DESCRIPTION	QTY	PART-NO
1.	CAM FOLLOWER MOUNTING BRACKET (UPPER)	1	WD60-CFB
2.	CAM FOLLOWER MOUNTING BRACKET (LOWER)	1	WD60-804
3.	CALIPER DISC BRAKE UNIT	1	Z49-92
4.	BALL BEARING (6301)	1	Z49-92
5.	RUBBER BUFFER 50MM DIA X 30 LONG TYPE A	2	Z40-21
6.	M10 HEX NUTS	4	Z18-10
7.	10MM DIA SPRING WASHERS	6	Z12-02-10
8.	M10 HEX HD SET X 40 LONG	2	Z26-064S
9.	TENSION SPRING	1	Z07-05
10.	EYE BOLT (M8)	1	WD60-EB
11.	M8 HEX NUTS	2	Z18-08
12.	M12 LOCKNUT	1	Z23-12
13.	SPROCKET/SHAFT ASSY	1	WD65-SPR
14.	5/16" UNF THREADED BAR X 90MM LONG	1	WD60-806
15.	5/16" UNF CLEVIS C/W PIN & CLIP	2	Z49-33
16.	5/16" UNF HEX NUT	2	Z15-05
17.	TURN TABLE	1	WD60-TA
18.	M12 HEX HD SETS X 40MM LONG	1	Z26-084S
19.	12MM DIA FLAT WASHER	2	Z11-02-12
20.	10MM DIA FLAT WASHER	7	Z11-02-10
21.	3/8" UNF HEX HD SET X 3" LONG	2	Z31B-102
22.	3/8" UN FLOCK NUT	2	Z15-06
23.	SPACER 1/2" O.D. X 13/32 I.D. X 1 1/2" LONG	2	Z49-92-01
24.	SPACER 1/2" O.D. X 13/32" I.D. X 1/2" LONG	2	Z49-92-02
25.	CLAMPING PLATE		WD60-836

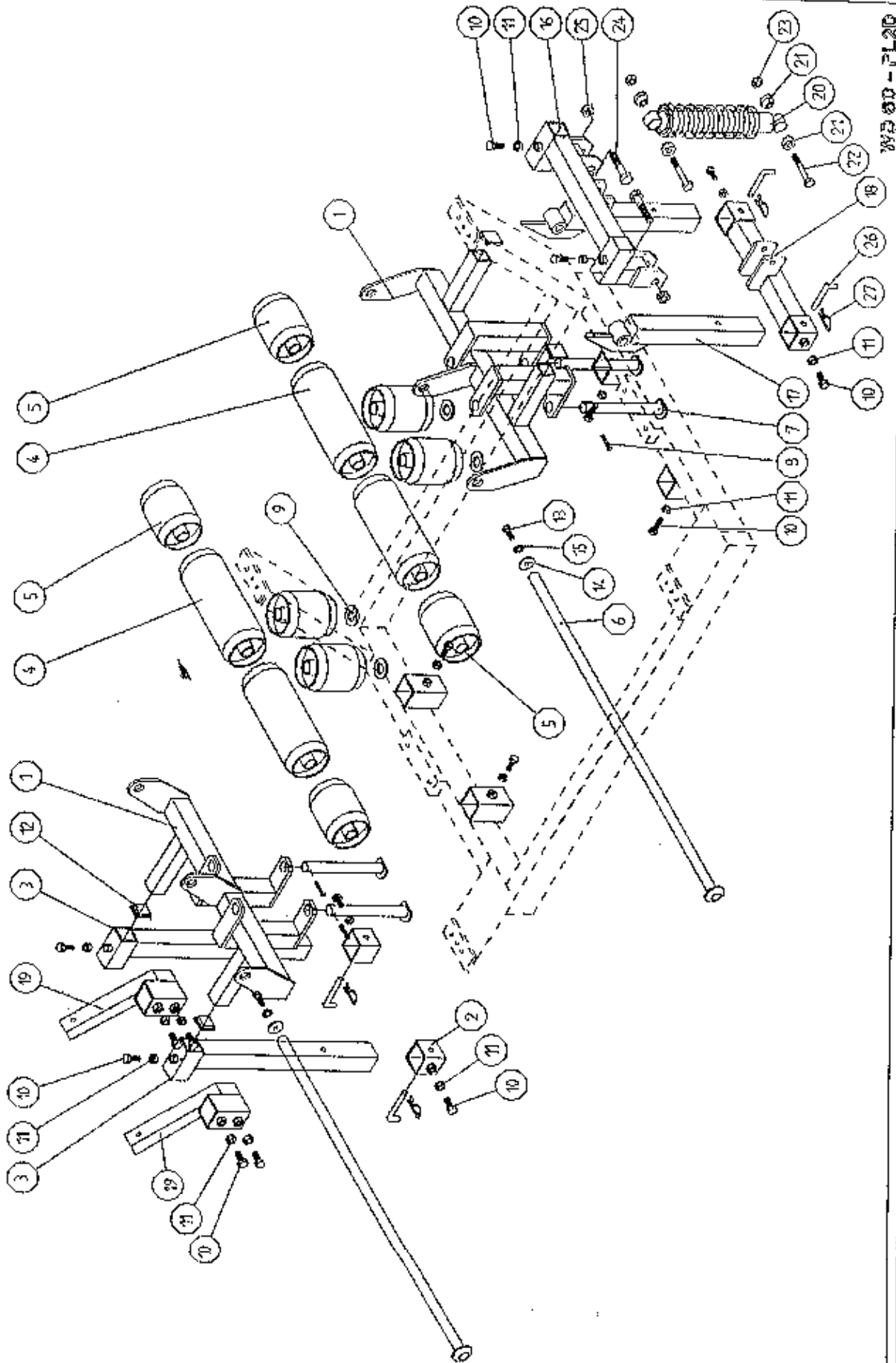
TANCO AUTOWRAP 1250 A MODEL (1994)
 VALVE/JUNCTION BOX / FILTER & DIVERTER VALVE MOUNTING BRACKETS ASSY



TANCO AUTOWRAP 1250A MODEL (1994)VALVE/JUNCTION BOX/FILTER & DIVERter VALVE MOUNTING
BRACKET ASSEMBLY
PARTS LIST

ITEM NO	DESCRIPTION	QTY	PART-NO.
1.	CHASSIS ASSY	1	
2.	5 BANK VALVE MOUNTING BRACKET ASSY	1	WD612-VMP
3.	JUNCTION BOX MOUNTING PLATE	1	WD612-04
4.	OIL FILTER/OVER-CENTRE-VALVE MOUNTING BRACKET	1	WD610-FVB
5.	FLOW DIVIDER MOUNTING BRACKET	1	WD65-FDM
6.	FLOW DIVIDER	1	Z01-03-10-A6
7.	6MM DIA MUD FLAP WASHER	2	Z11-02-061
8.	8MM DIA MUD FLAP WASEHR	2	Z11-02-081
9.	M6 LOCKNUT (NYLOCK)	4	Z23-06
10.	OIL FILTER	1	Z01-24-08
11.	M8 HEX HD SET x 25mm	4	Z26-040S
12.	8mm DIA SPRING WASHER	4	Z12-02-08
13.	M8 LOCKNUTS	6	Z23-08
14.	M6 ALLEN HD SOCKET SCREW x 50mm	4	Z13-020-50
15.	M12 HEX HD SET x 30mm	1	Z26-082S
16.	M12 HEX NUT	1	Z18-12
17.	OVER-CENTRE VALVE	1	Z01-03-10-A8
18.	PLASTIC CAP TO SUIT 40 x 40 RHS	3	Z40-07
19.	JUNCTION BOX	1	ZDG-JB2
20.	8mm DIA FLAT WASHER	12	Z10-02-08
21.	M4 ALLEN HD SOCKET SCREW x 16mm	4	Z26-006
22.	M4 LOCKNUT	4	Z23-04
23.	M8 HEX HD SET x 20mm	6	Z26-039S

TANCO AUTOWRAP 1250 MODEL (1994)
 END ROLLER MOUNTING BRACKET ASSEMBLY



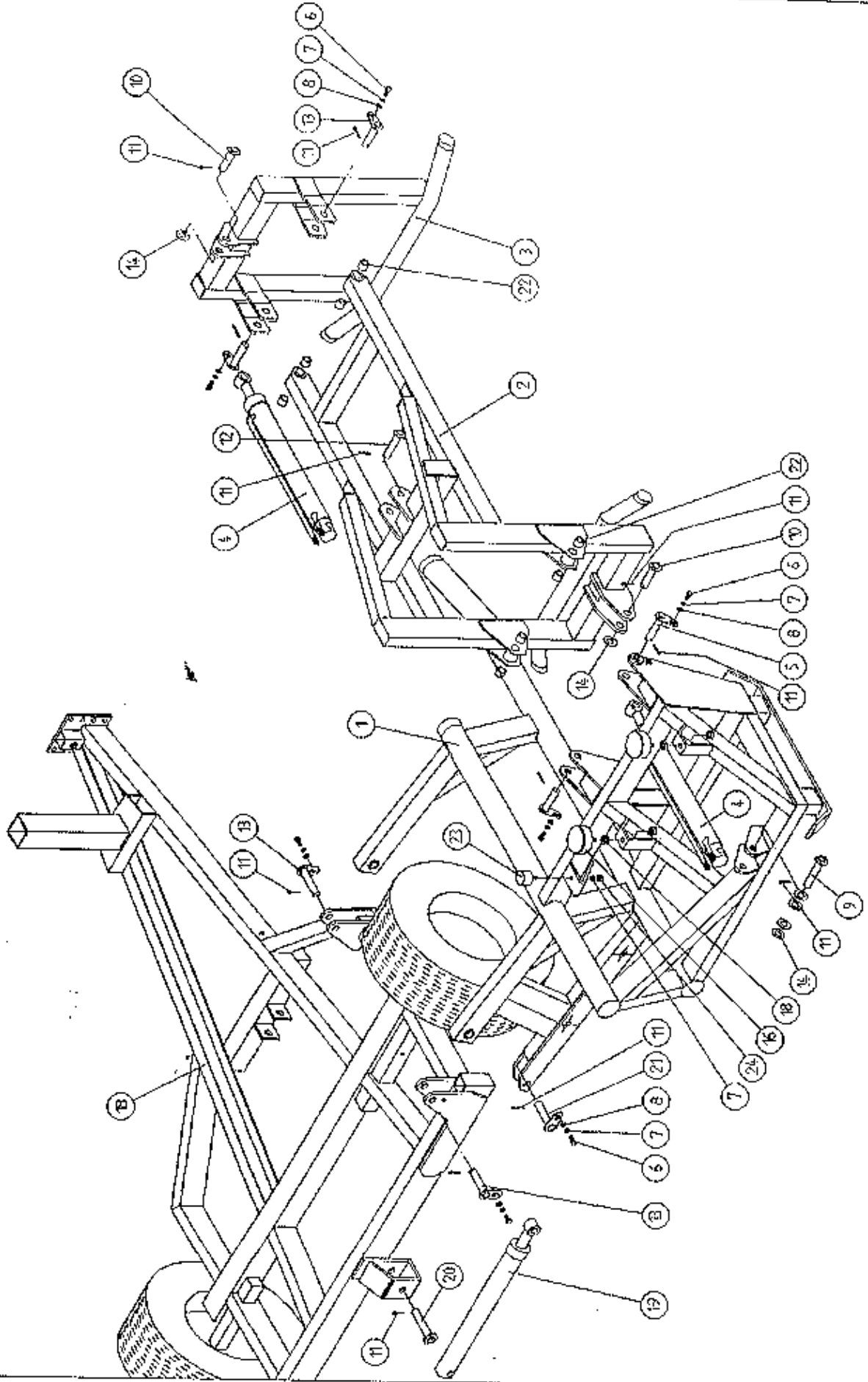
WD 800 - PL 20

TANCO AUTOWRAP 1250 MODEL 1994
END ROLLER MOUNTING BRACKET ASSY

WD60-PL20

ITEM NO	DESCRIPTION	QTY	PART-NO.
1.	ROLLER MOUNTING BRACKET	2	WD625-ERM1
2.	SOCKET ASSY LOWER	2	WD625-SA
3.	SOCKET ASSY UPPER	2	WD625-ERSA
4.	ROLLER ASSY (LONG)	4	WD625-LRA
5.	ROLLER ASSY (SHORT)	8	WD625-ERA5
6.	ROLLER PIVOT PIN (LONG)	2	D625-PL
7.	ROLLER PIVOT PIN (SHORT)	4	WD625-ERPS
8.	1/4" DIA SPLIT PIN X 1 1/2" LONG	4	Z03-21-27
9.	1" HEAVY DUTY FLAT WASHER	4	Z10-02-25
10.	M12 HEX H SET X 40MM LONG	16	Z26-084S
11.	M12 HEX NUT	16	Z18-12
12.	PLASTIC CAP	4	Z32-07
13.	M10 HEX D ST X 25MM LONG (TUFLOCK)	2	Z26-016S
14.	THRUST WASHER	2	WD623-071
15.	10MM DIA SPRING WASHER	2	Z12-02-10
16.	PIVOT BRACKET UPPER	1	WD625-PBU
17.	PIVOT BRACKET LOWER	1	WD625-PBL
18.	DAMPER BRACKET LOWER	1	WD625-DBL
19.	CUT AND START MOUNTING BRACKET	2	WD625-CSM
20.	DAMPER SPRING	1	Z07-60
21.	SPACER	4	WD612-038
22.	M16 HEX HD BOLT X 80MM LONG	2	Z26-130B
23.	M16 LOCKNUT	2	Z23-16
24.	3/4" UNC HEX HD BOLT X 100MM	2	Z27-134B
25.	3/4" UNC HEX LOCKNUT	2	Z23-201
26.	BISSEL PIN	2	Z03-22-AW82
27.	4MM "R" CLIP	2	Z36-0221

TANCO AUTOWRAP 1250S/1250A MODEL
LIFT ARM ASSEMBLY



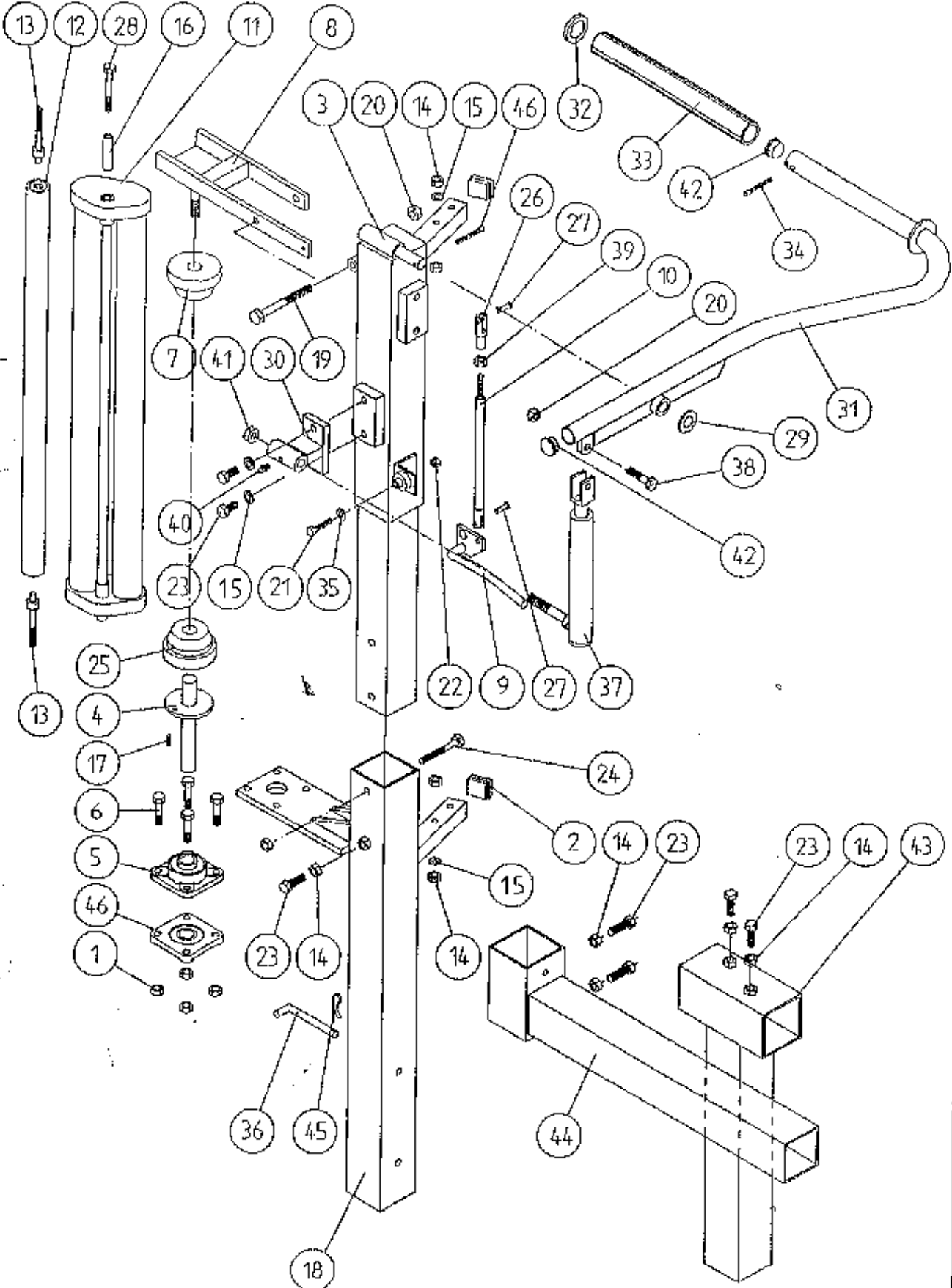
WD60-PL1

TANCO AUTOWRAP 1250S/1250A MODEL 1994
LIFT ARM ASSEMBLY

PARTS LIST

ITEM NO	DESCRIPTION	QTY	PART-NO.
1.	LIFT ARM ASSY	1	WD625-LA
2.	LIFT ARM - GRAB FRAME	1	WD625-LAGF
3.	LIFT ARM - GRAB SECTION	1	WD625-LAGS
4.	HYDRAULIC RAM D/A	1	Z01-01-140
5.	GRAB FRAME PIVOT PIN C/W GREASE NIPPLE	2	Z03-01-796
6.	M10 HEX HD SET x 25mm LONG	7	Z26-061S
7.	10mm DIA SPRING WASHER	8	Z12-02-10
8.	10mm DIA FLAT WASHER	7	Z11-02-10
9.	MAIN FRAME BOTTOM RAM PIVOT PIN	1	Z03-02-54
10.	MAIN FRAME AND GRAB TOP RAM PIVOT PIN	2	Z03-03-50
11.	1/4" DIA SPLIT PIN x 1 1/2" LONG	11	Z03-21-27
12.	GRAB BOTTOM RAM PIVOT PIN	1	Z03-0-218
13.	GRAB PIVOT & LIFT ARM PIVOT PIN C/W GREASE NIPPLE	4	Z03-01-905
14.	1" DIA HEAVY FLAT WASHER	6	Z10-02-25
15.	HYDRULIC RAM D/A	1	Z01-01-140S
16.	RUBBER BUFFER 100mm DIA x 40mm LONG	2	Z40-26
17.	M16 HEX NUT	4	Z18-16
18.	CHASSIS ASSY	1	WD60-CHA
19.	HYDRAULIC RAM (LIFT ARM)	1	Z01-01-AWQI2
20.	RAM BOTTOM PIVOT PIN	1	Z03-02-330
21.	RAM TOP PIVOT PIN	1	Z03-01-797
22.	TENSION BUSHES	8	Z03-20-015
23.	BUFFER 56mm DIA x 40mm LONG	1	Z40-20
24.	M10 HEX NUT	1	Z18-10

TANCO AUTOWRAP 1250A MODEL 1994
FILM DISPENSOR SYSTEM

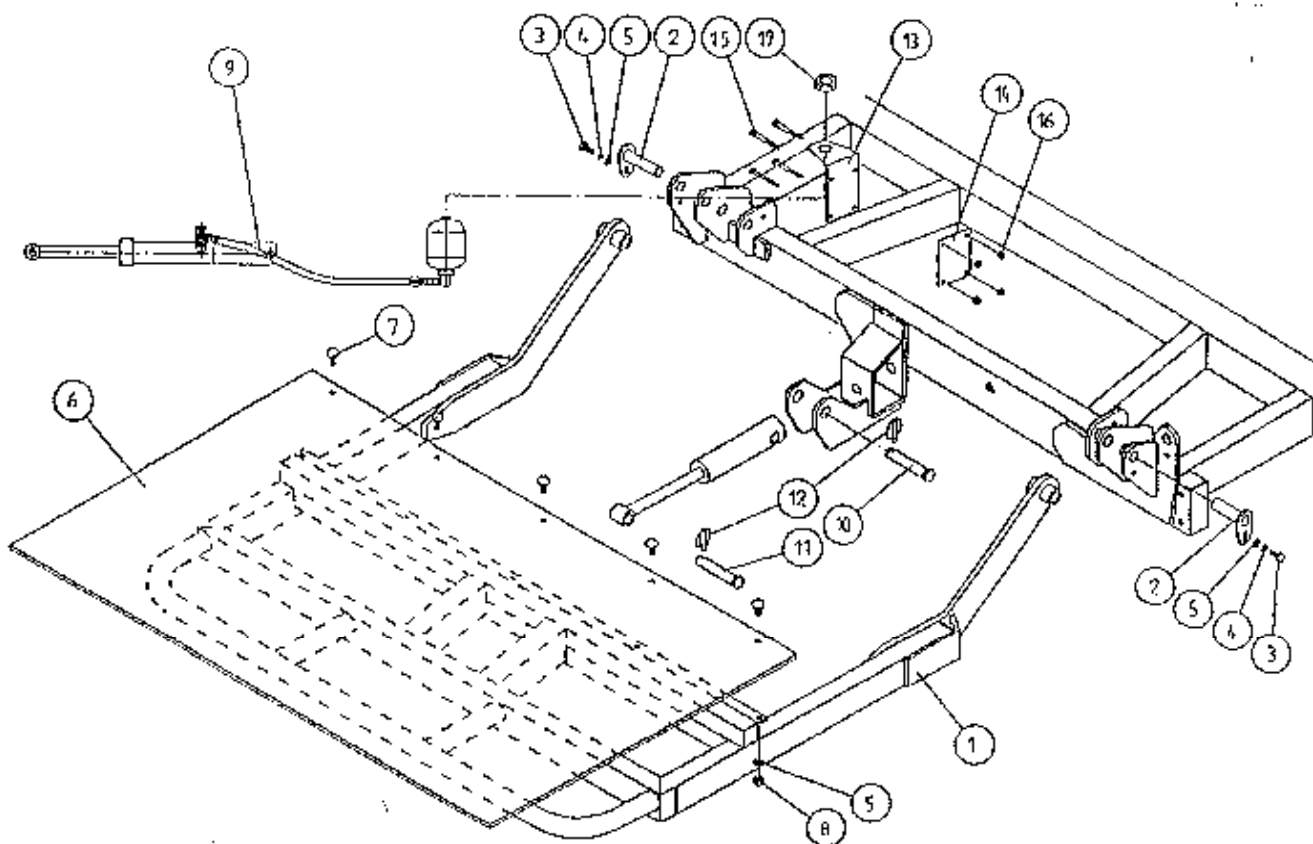


FILE NAME WJ 625 - PL.9

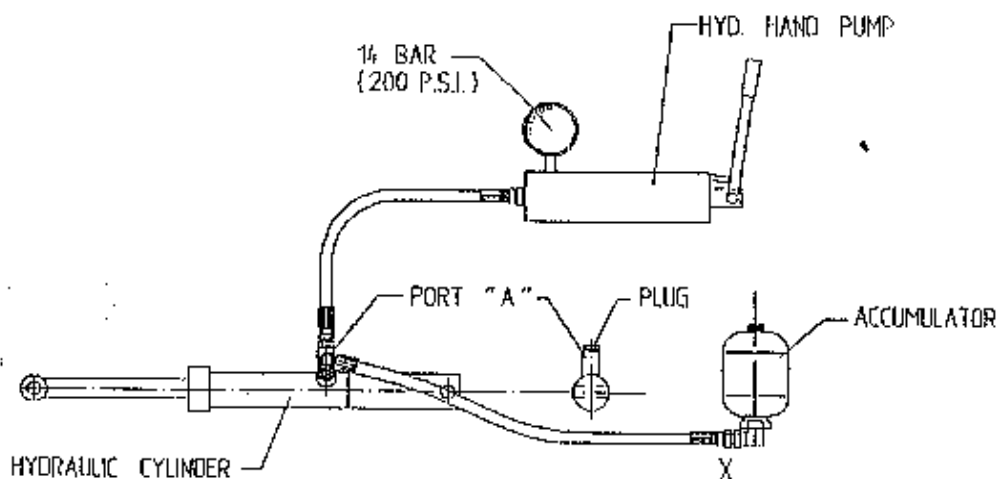
TANCO AUTOWRAP 1250A MODEL (TRAILED) 1994
FILM DISPENSING SYSTEM

ITEM NO	DESCRIPTION	QTY	PART-NO
1.	M10 LOCKNUTS	4	Z23-10
2.	PLASTIC CAPS (TO SUIT 40 X 40 X 3 RHS)	2	Z32-07
3.	DISPENSER MOUNTING (UPPER)	1	WD60-DMUH
4.	FILM SPOOL ASSEMBLY	1	WD60-SPO
5.	1" DIA FLANGE BEARING C/W CAM LOCK	1	Z06-48EC
6.	M10 HEX HD BOLT X 50MM LONG	4	Z26-066B
7.	CONE (TOP) C/W BALL BEARINGS	1	Z06-45-01
8.	CLAMP ASSEMBLY	1	WD60-DMCA
9.	LEVER ASSEMBLY	1	WD60-DMLA
10.	LINK ASSEMBLY	1	WD60-DMLK
11.	FILM DISPENSER UNIT MK 8 (55% STRETCH)	1	D6151
12.	SLAVE ROLLER ASSY (PLASTIC COATED)	1	WD65-SLR
13.	SLAVE ROLLER PIVOT	2	WD60-253
14.	M12 HEX NUTS	9	Z18-12
15.	12MM DIA SPRING WASHER	2	Z12-02-12
16.	SLEEVE	1	D52012
17.	3/4" DIA TENSIN PIN X 3/4" LONG	1	Z03-20-062
18.	DISPENSER MOUNTING (LOWER)	1	WD60-DMLH
19.	M12 HEX HD BOLT X 130MM LONG	1	Z26-094B
20.	M12 LOCKNUT	3	Z23-12
21.	M8 HEX HD BOLT X 35MM LONG	1	Z26-042S
22.	M8 LOCKNUT	1	Z23-08
23.	M12 HEX HD SET X 30M LONG	3	Z26-082S
24.	M12 HEX HD BOLT X 100MM LONG	1	Z26-092B
25.	CONE (BOTTOM)	1	Z06-45-02
26.	CLEVIS (M10)	1	Z49-335
27.	PIN (5/16" DIA C/W CLIP)	2	Z49-337
28.	M10 HEX HD BOLT X 80MM LONG	1	Z26-0691B
29.	3/4" DIA FLAT WASHER	1	Z10-02-19
30.	FILM PULL DOWN BRACKET ASSY	1	WD65-FPDB
31.	FILM PULL DOWN ARM ASSY	1	WD65-FPDA
32.	RETAINING WASHER	1	WD60-859
33.	ROLLER	1	WD60-866
34.	2" X 1/4" SPLIT PIN	1	Z01-23-29
35.	4MM "R" CLIP	1	Z36-02
36.	BISSEL PIN (110MM LONG)	1	WD60-874
37.	HYDRAULIC RAM	1	Z01-01-AW25
38.	M12 HEX HD SET X 50MM LONG	1	Z26-086S
39.	5/16" UNF HEX NUT	1	Z15-05
40.	1/8" BSP ST GREASE NIPPLE	1	Z39-60
41.	M16 LOCKNUT	1	Z23-16
42.	1" GB PLASTIC CAP	2	Z32-14
43.	DISPENSER MAST HORIZONTAL SOCKET ASSY	1	WD65-DHS
44.	DISPENSER MAST VERTICAL SOCKET ASSY	1	WD65-DVS
45.	4MM "R" CLIPS	1	Z36-02
46.	1" DIA FLANGE BEARING	1	Z06-48

TANCO AUTOWAP 1995 MODEL HYDRAULIC BALE RAMP



INSTRUCTIONS FOR RECHARGING HYDRAULIC CYLINDER



1. REMOVE PLUG FROM PORT "A".
2. CONNECT HOSE FROM HYD. HAND PUMP TO PORT "A".
3. CHARGE CYLINDER TO A PRESSURE OF 14 BAR (200 P.S.I.)
4. BLEED AIR FROM SYSTEM BY SLACKENING HOSE CONNECTION AT BASE OF ACCUMULATOR MARKED X. RETIGHTEN CONNECTION.
5. REMOVE PUMP HOSE FROM PORT "A" AND REFIT PLUG.

FILE NAME W064-PL2E

TANCO AUTOWRAP 1995 MODEL
HYDRAULIC BALE RAMP

PARTS LIST

ITEM	DESCRIPTION:	QTY:	PART NO:
1	HYDRAULIC BALE RAMP ASSY	1	WD65-HBRF
2	RAMP MAIN PIVOT PIN C/W GREASE NIPPLE	2	Z03-01-905
3	M10 HEX HD SET X 20mm LONG TUFLOCK	2	Z26-060ST
4	10MM DIA MACHINED FLAT WASHER	2	Z11-02-10
5	10MM DIA SPRING WASHER	12	Z12-02-10
6	BALE MAT	1	Z05-02-BRH
7	M10 X 30MM LONG CUP HD.SQ BOLTS	5	Z13-112
8	M10 HEX NUTS	5	Z18-10
9	HYDRAULIC RAM C/W ACCUMULATOR	1	Z01-01-AWD
10	SPAREX PIN	1	Z03-04-74
11	SPAREX PIN	1	Z03-04-73
12	7/16 DIA LINCH PIN	2	Z03-22-06
13	ACCUMULATOR MOUNTING PLATE	1	WD65-AMP
14	CLAMPING PLATE	1	WD65-231
15	M8 HEX HD BOLT X 80MM LONG	4	Z26-050B
16	M8 LOCKNUT	4	Z23-08
17	M28 X 1.5 PITCH HEX NUT	1	Z18-28

FAULT FINDING

PROBLEMS.

- | | |
|---|--|
| 1. Drive Roller and Bale belt not driving | Check and replace shear Pins in sprocket on drive roller. |
| 2. Film Breaking | Wash off dispenser and slave rollers Change roll of film. Use recommended films only. |
| 3. Film not wrapping evenly on | Adjust film mast so centre of film roll is aligned with centre of bale |
| 4. Film Tearing on Ramp. | Check for sharp edges and remove. |
| 5. Bale Skidding on Ramp. | Fit Hessian Bag or piece of carpet to Ramp. |
| 6. Film Dispenser not Pre-Stretching Film. | Check that both Rollers turn when one is turned by hand. If not, fit new gears or replace unit. |
| 7. Tyres coming off 4" platform Support Wheels. | Replace Wheels - Reduce speed below 30 r.p.m. - Do not grease path of wheels on platform. Check that bale does not get trapped between arms and turntable when being loaded.

If this happens lower arm and start again. |

8. MAIN BELT MOVING SIDWAYS

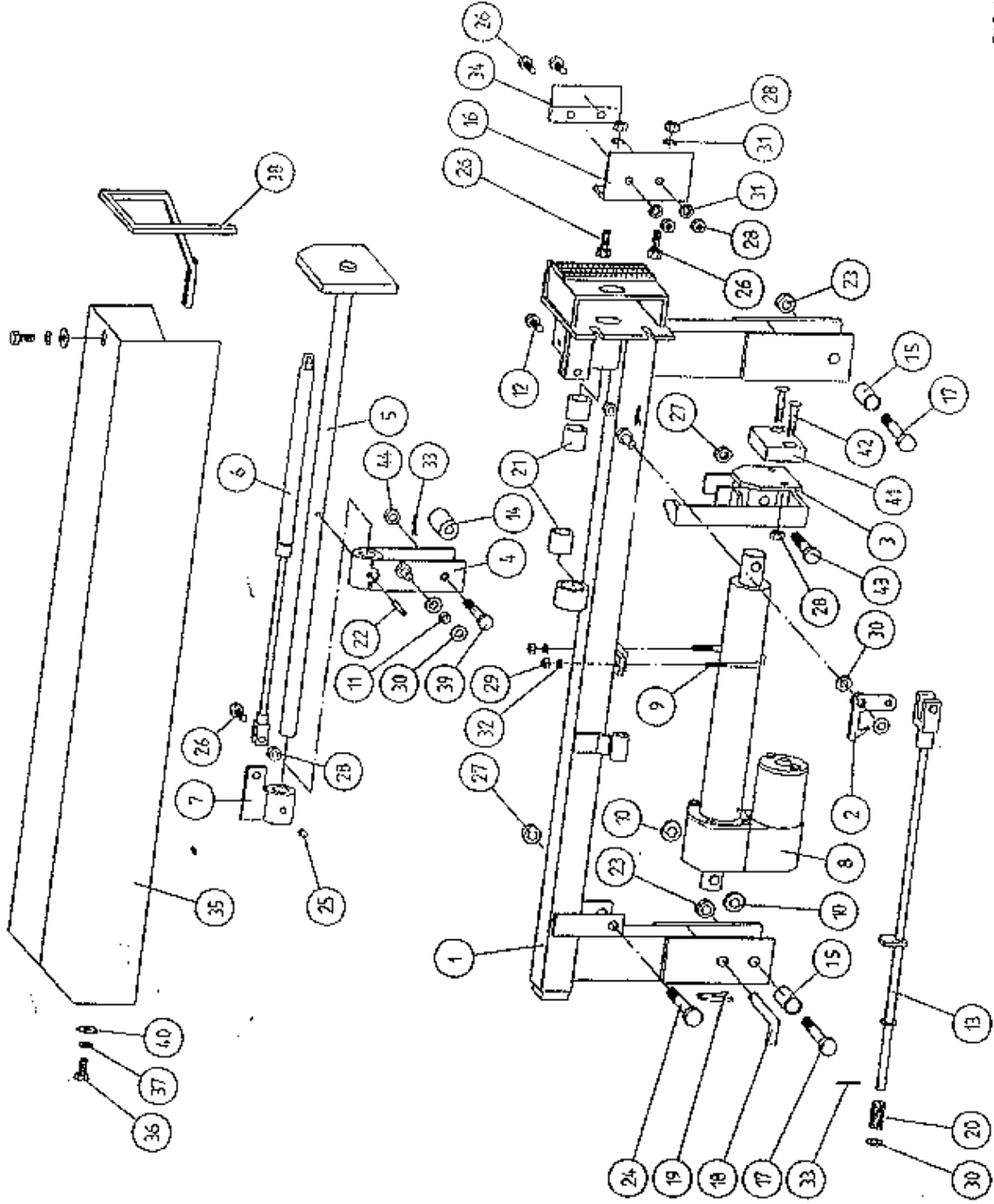
- (i) Ensure vertical rollers (plastic) are in tight on the bale. Remember that the bale will reduce in size during wrapping and, on the round bales in particular, the corners will become rounded so that the bale will tend to move sideways due to centrifugal forces. Now, if the plastic rollers are too far apart, the bale will move against one of the plastic rollers causing the belt to move in the opposite direction. Always adjust the vertical plastic rollers so that they keep the bale central on the belt.
- (ii) Adjust bale stop on lift arm so that bale is loaded centrally onto platform.
- (iii) Check that bale belt is fitted so arrow points in direction of travel.
- (iv) Check that both 8" rollers underneath the bale belt are parallel to each other. Remember the golden rule - a belt will always move up a slope. So, if the belt continually moves to one side, adjust idler roller to a narrower setting on the opposite side to which the belt travels.
- (v) Check that gripface strips are securely fixed to the roller and have not moved out of alignment.
- (vi) Check that it is the same measurement each side by running a string around the belt and measuring it. If one side is longer than the other replace the belt.

200

200

TANCO AUTOWRAP CUT AND START UNIT (1995)

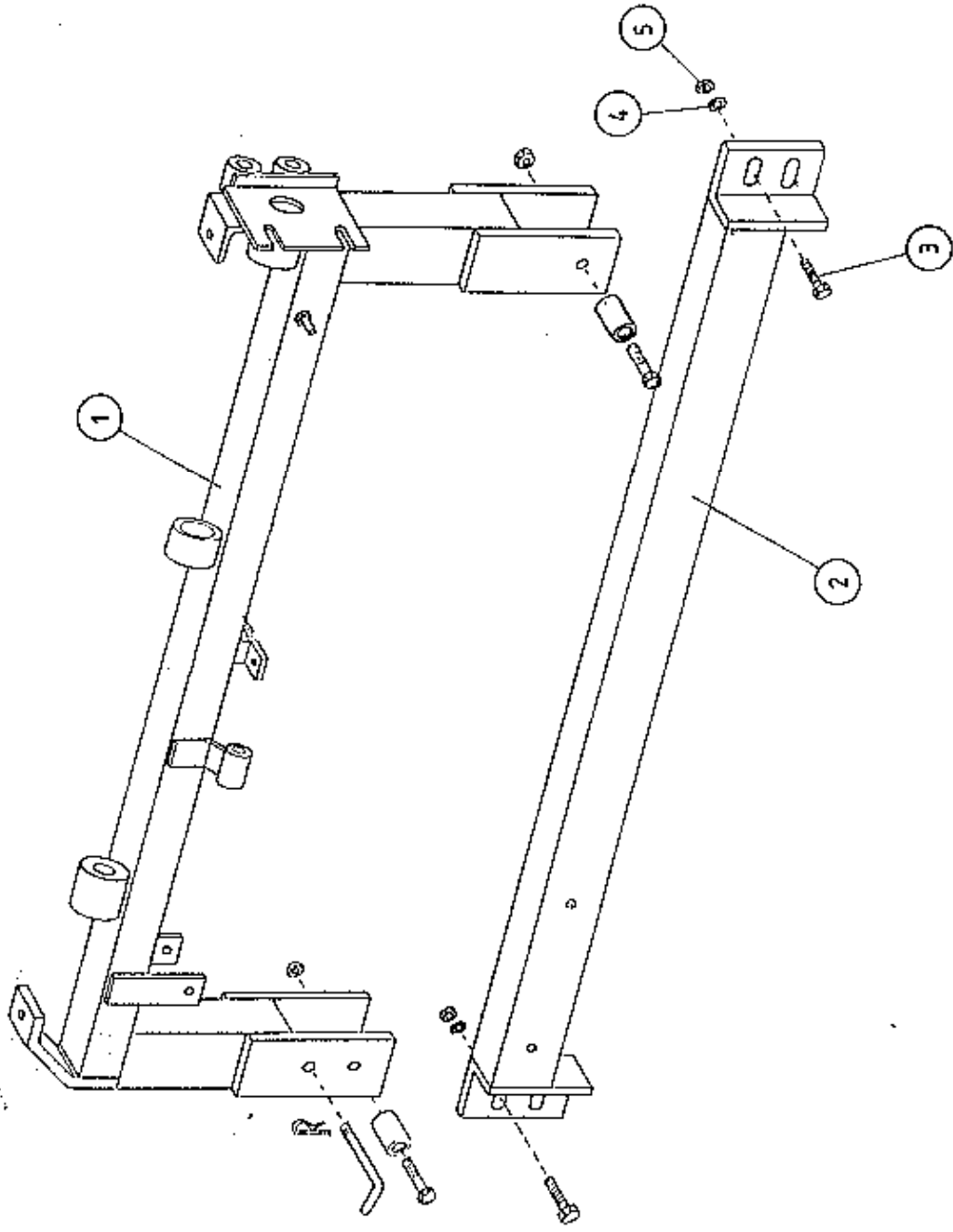
MAIN ASSEMBLY



**TANCO AUTOWRAP
CUT AND START UNIT (1995)
PARTS LIST**

ITEM NO	DESCRIPTION	QTY	PART-NO.
1.	MAIN MOUNTING FRAME ASSY	1	WD605-MF1
2.	LATCH ASSY.	1	WD605-LA
3.	PUSH PLATE / POINTER ASSY.	1	WD605-PPP
4.	GUIDE ASSY	1	WD605-GD1
5.	PLUNGER ASSY	1	WD605-PL1
6.	GAS SPRING	1	Z07-47
7.	GAS SPRING MOUNTING BRACKET	1	WD605-GSM
8.	WARNER LINEAR ACTUATOR D11 10B5 08	1	ZD605-510
9.	"U" BOLT	1	WD605-45
10.	SPACER 1" X OD X 1/2" ID X 6mm LONG	2	WD605-65
11.	SLEEVE 1/2" DIA O.D. X 13/32" DIA I.D.	1	WD605-47
12.	M8 HEX HD SET X 35mm LONG	1	Z26-042S
13.	TRIGGER ASSEMBLY	1	WD605-TRG
14.	COLLAR 1" DIA BRIGHT RD. X 41.5mm LONG	1	WD605-51
15.	SPACER	1	WD605-100
16.	BLADE GUARD/MOUNTING BRACKET	1	WD605-105
17.	M12 HEX HD BOLT X 80mm LONG	2	Z26-0901B
18.	BISSEL PIN	1	Z03-22-AW100
19.	4mm "R" CLIP	1	Z36-02
20.	SPRING 1.6mm O.D X 1.5mm WIRE X 48mm LONG	1	Z07-34
21.	OILITE OIL RETAINING BUSH 1 1/8" O.D.	3	Z06-105
22.	1 1/2" X 1/4" DIA TENSION PIN	1	Z03-20-07
23.	M12 LOCKNUTS	2	Z23-12
24.	M12 HEX HD BOLT X 65mm	1	Z26-0882B
25.	M8 GRUB SCREW	1	Z28-008
26.	M8 HEX HD SET X 25mm	3	Z26-040S
27.	M12 BINX LOCKNUT	4	Z23-12BX
28.	M8 LOCKNUT	8	Z18-08
29.	M6 LOCKNUT (NYLOCK)	2	Z23-06
30.	10mm DIA FLAT WASHER	10	Z11-02-10
31.	8mm DIA FLAT WASHER	5	Z11-02-08
32.	6mm DIA FLAT WASHER	2	Z11-02-06
33.	3mm DIA SPLIT PIN	2	Z03-21-02
34.	BLADE	1	WD605-104
35.	MAIN GUARD	1	WD605-MG
36.	M8 HEX HD SET X 20mm LONG	2	Z26-039S
37.	8mm DIA SPRING WASHER	9	Z12-02-08
38.	EDGING STRIP	1	Z44-12
39.	M10 HEX HDSET X 20mm	2	Z26-060S
40.	8mm DIA FLAT WASHER 1" O.D.	4	Z11-02-081
41.	PACKER	1	WD605-133
42.	M8 X 40 COUNTER SUNK BOLT	2	Z13-5-08X40
43.	M12 HEX HD BOLT X 50mm LONG	1	Z26-086B
44.	M10 LOCKNUT	1	Z23-10

T. NCC AUTOWRAP CUT AND MOUNTING FRAME PART (94)



WD605-MF

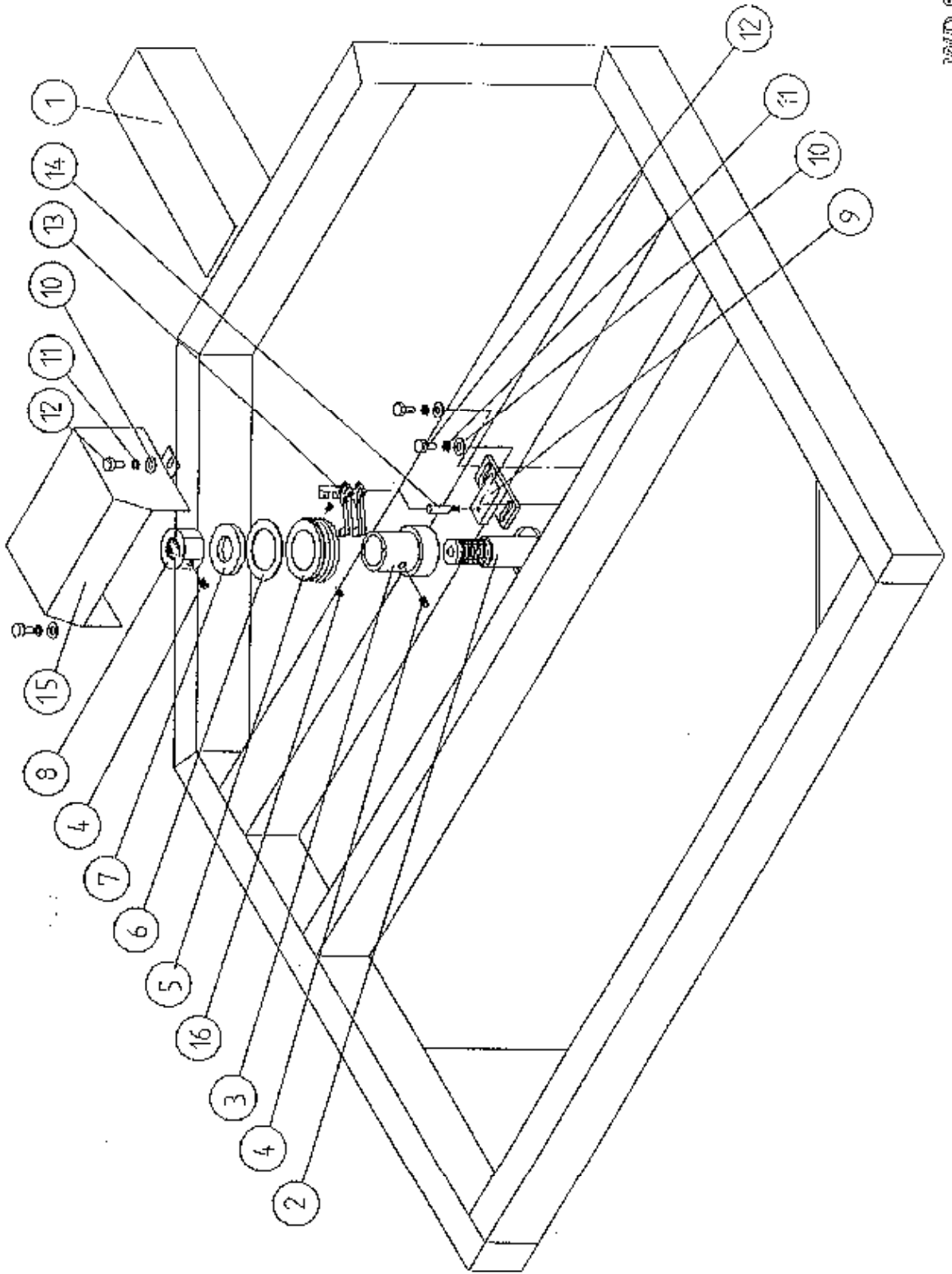
TANCO AUTOWRAP CUT AND START UNIT (1994)

MOUNTING FRAME

PARTS LIST

ITEM NO	DESCRIPTION	QTY	PART-NO
1.	MAIN MOUNTING FRAME ASSY	1	WD605-MF
2.	MAIN FRAME MOUNTING	1	WD605-MFM
3.	M10 HEX HD SET x 30mm LONG	2	Z26-062S
4.	10mm DIA SPRING WASHER	2	Z12-02-10
5.	M10 HEX NUT	2	Z18-10

TANCO AUTOWRAP - CUT AND START UNIT (1994)
SLIP RING ASSEMBLY

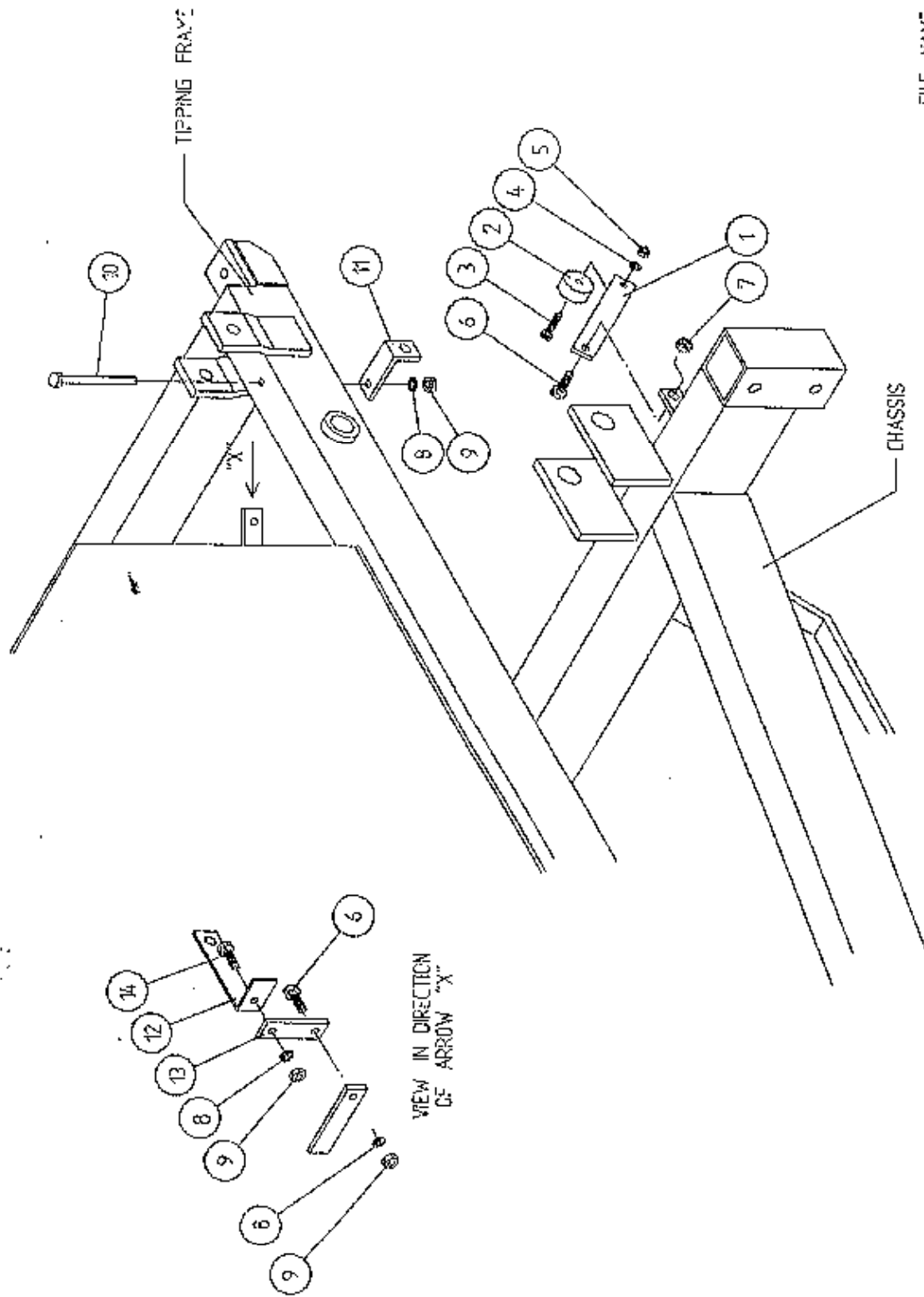


**TANCO AUTOWRAP CUT AND START UNIT (1994)
SLIP RING ASSY.**

PARTS LIST

<u>ITEM NO.</u>	<u>DESCRIPTION</u>	<u>QTY.</u>	<u>PART-NO.</u>
1.	UNDERSIDE OF TIPPING FRAME	1	
2.	TURNTABLE CENTRE SHAFT	1	WD60-768
3.	SLIP RING MOUNTING SLEEVE	1	WD60-825
4.	M8 GRUB SCREW x 6 mm LONG	2	Z28-007
5.	SLIP RING ASSY.	1	ZD605-308
6.	INSULATING RING	1	ZD605-350
7.	LOCKING COLLAR	1	WD60-770
8.	1 1/4" UNC HEX NUT	1	Z18-300
9.	SLIP RING MOUNTING BRACKET ASSY	1	WD605-SRMB
10.	10mm DIA FLAT WASHER 1" O.D.	4	Z11-02-101
11.	10mm SPRING WASHER	4	Z12-02-10
12.	M10 HEX HD SET x 20mm	4	Z26-060S
13.	BRUSHES	2	ZD605-306
14.	INSULATOR SLEEVE	1	ZD605-302
15.	SLIP RING GUARD ASSY	1	WD605-SRG
16.	M5 GRUB SCREW	2	Z28-005

TANCO AUTOWRAP
 CUT AND START UNIT
 SENSOR & MAGNET MOUNTING BRACKETS



TANCO AUTOWRAP CUT AND START UNIT 1994SENSOR AND MAGNET MOUNTING BRACKETSPARTS LIST

ITEM NO.	DESCRIPTION	QTY.	PART-NO.
1.	MAGNET MOUNTING BRACKET	1	WD605-57
2.	MAGNET	1	D6043
3.	M6 HEX HD SET x 30mm LONG	1	Z26-022S
4.	6mm DIA FLAT WASHER	1	Z11-02-06
5.	M6 LOCKNUT	1	Z23-06
6.	M8 HEX HD SET x 25mm LONG	2	Z26-040S
7.	M8 LOCKNUT (NYLOCK)	1	Z23-08
8.	8mm DIA SPRING WASHER	3	Z12-02-08
9.	M8 HEX NUT	3	Z18-00
10.	M8 HEX HD SET x 100mm LONG	1	Z26-057S
11.	SENSOR MOUNTING BRACKET	1	WD605-58
12.	ROTATE SENSOR MOUNTING BRACKET	1	WD605-140
13.	MOUNTING FLAT	1	WD605-07
14.	M8 HEX HD SET x 20mm LONG	1	Z26-020S